

# THE TURING BUILDING



**WORK.  
CULTURE.  
REDEFINED.**



**STRATFORD  
CROSS**

 **lendlease**



# THE TURING BUILDING



THE BUILDING







# STRATFORD

Sadler's Wells

BBC

ual:

V&A

The Turing Building





- EDUCATION
- CULTURE
- SPORT
- BUSINESS
- RETAIL

**STRATFORD  
CROSS**  
WORKPLACE DESTINATION

EAST BANK  
CULTURAL  
QUARTER

WESTFIELD  
STRATFORD CITY

LONDON  
AQUATICS CENTRE

LONDON  
STADIUM

STRATFORD

STRATFORD INTL.

COPPER BOX  
ARENA

VICTORIA PARK

LONDON  
COLLEGE OF  
FASHION, UAL

HACKNEY WICK

THE TURING  
BUILDING

UCL:  
UNIVERSITY  
COLLEGE LONDON

ABBA ARENA

SADLER'S WELLS  
OPEN NOW

PLEXAL

LEE VALLEY  
VELO PARK

V&A EAST  
OPENING  
SPRING 2026

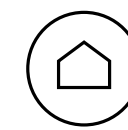
HERE EAST  
INNOVATION  
CAMPUS

BBC  
OPENING 2026

QUEEN ELIZABETH  
OLYMPIC PARK

← IT'S  
ALL HERE





# EAST LONDON'S CULTURAL HEART

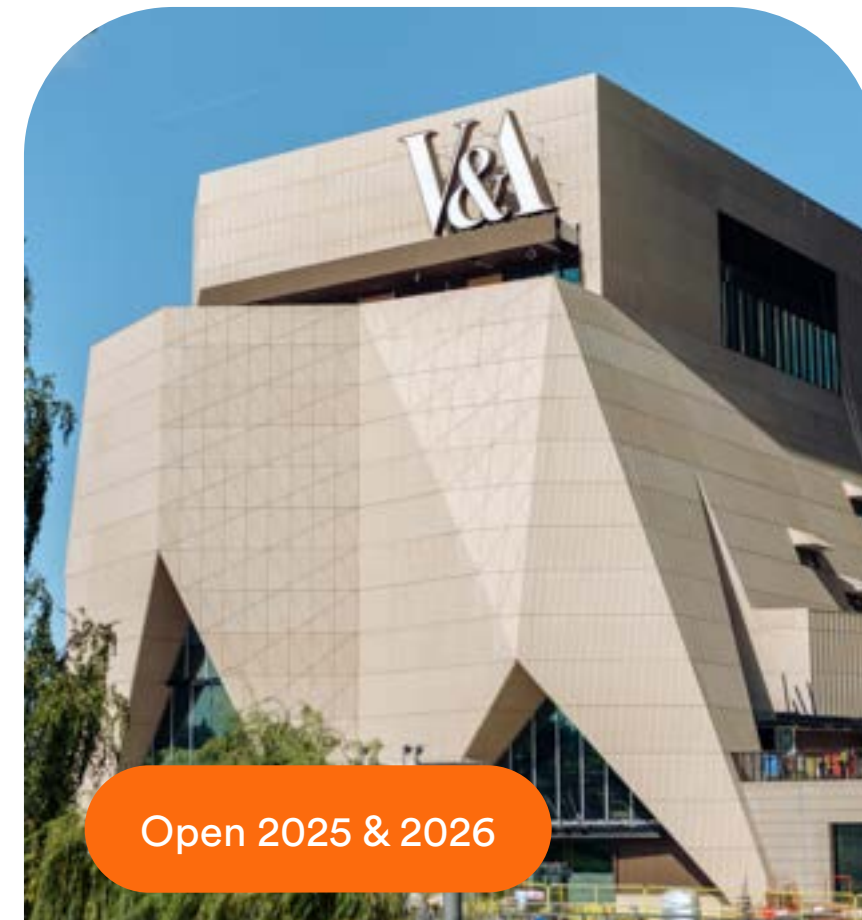
Collaborate with East Bank, the UK's newest quarter at Queen Elizabeth Olympic Park, home to the country's most iconic and influential arts and media institutions. With 400,000 visitors expected in 2025, it's a hub of creativity and opportunity.



Ranked #1 best thing to do in the UK in 2025 by TimeOut  
Open Now

## Sadlers's Wells

Sadler's Wells is a cultural destination for local creativity and national impact. With a 550-seat theatre, six dance studios and a wrap-around foyer fit for large-scale showcases, it provides artists and the community with the space they need to develop, train and perform.



Open 2025 & 2026

## V&A

V&A East builds on the V&A's founding mission to make the arts accessible to all. Across two sites – the Museum and Storehouse – it will become a campus of creative excellence, equipping young people with the skills they need to flourish, and providing artists with a platform to share their diverse, global stories.

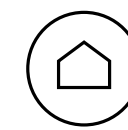


Open 2026

## BBC

A purpose-built base for BBC Music, the new East Bank site will incorporate state-of-the-art recording and rehearsal studios to reach audiences in new ways. It will also host all of the BBC's music education and outreach programmes, working alongside schools to inspire local talent.



[STRATFORD](#)[THE BUIDLING](#)[THE CONNECTIONS](#)[SUSTAINABILITY](#)[LENDLEASE](#)[CONTACT](#)

# UK'S LARGEST EDUCATION HUB

London's Stratford is fast becoming the place to be for educational institutions seeking new, experiential, inclusive and highly accessible areas for learning. Students are at the heart of this thriving, dynamic, collaborative community where learning, world leading research intersects with culture, business and extraordinary innovation.



**ual:** london college of fashion



## Loughborough University

Ranked #1 in sports education globally for the 8th year in a row, Loughborough University offers a variety of postgraduate programmes including business tech, enterprise, media & design. At the heart of a dynamic innovation and tech hub, Loughborough places a strong emphasis on connecting students with industry through realworld experience and fostering close relationships with its neighbours.



## London College of Fashion, UAL

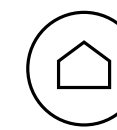
UAL's London College of Fashion campus is intent on taking advantage of Stratford's emerging collaboration between the arts, learning and creativity. Open since September 2023, it helps students, staff and alumni find influence in both the nearby area and its rich diversity.



## UCL EAST

UCL East marks the most significant expansion in the university's nearly 200-year history – a bold new chapter in their tradition of disruptive thinking. Located just minutes from the heart of Queen Elizabeth Olympic Park, the campus offers innovative new degrees such as robotics and AI and the space to tackle some of the world's biggest challenges.

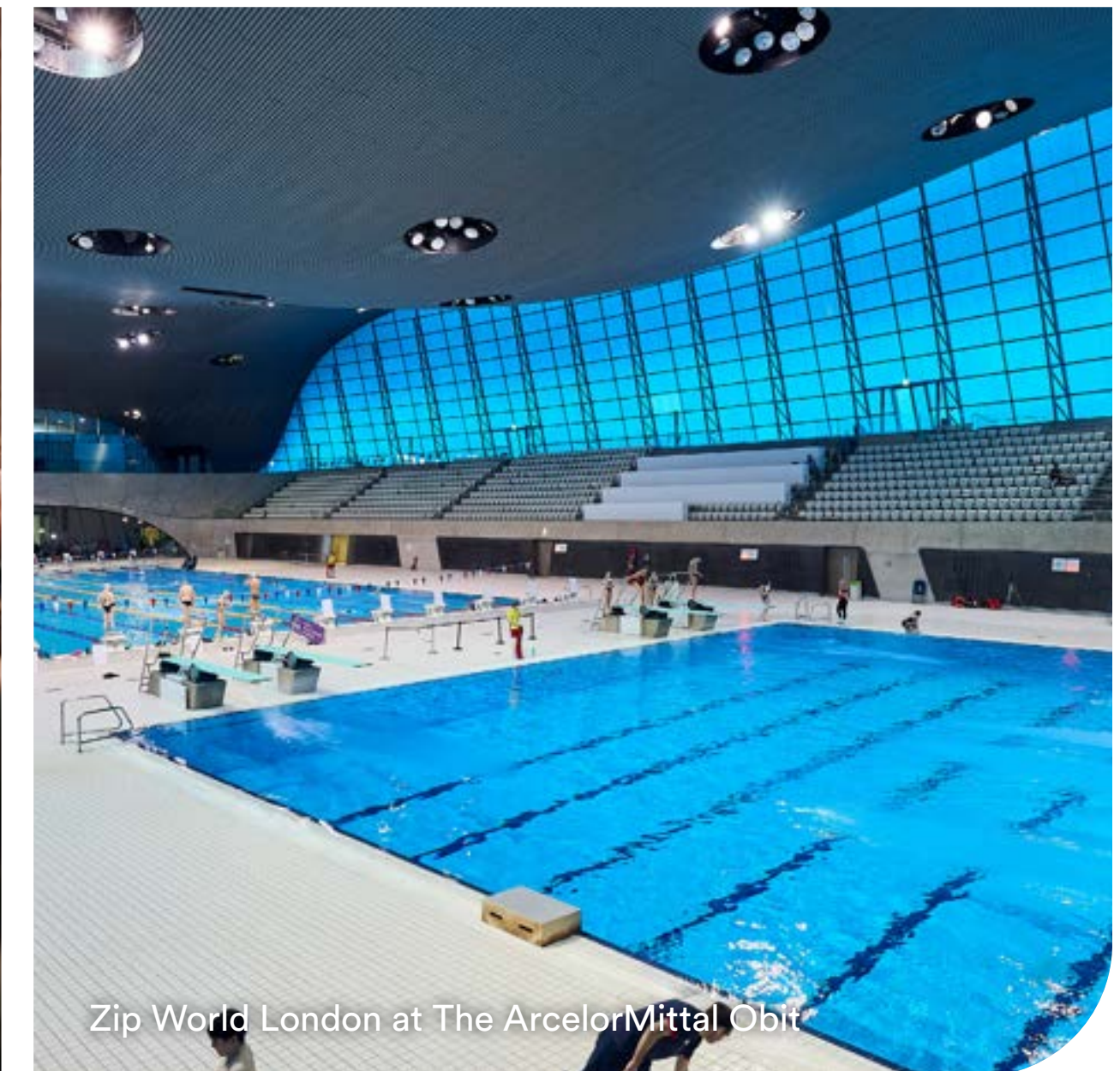


[STRATFORD](#)[THE BUIDLING](#)[THE CONNECTIONS](#)[SUSTAINABILITY](#)[LENDLEASE](#)[CONTACT](#)

London Stadium



Explore a variety of events all year round



Zip World London at The ArcelorMittal Orbit

# UNLIMITED

# EXPERIENCES

Just moments from Stratford Cross, Queen Elizabeth Olympic Park, born from the legacy of the London 2012 Games, offers a unique and inspiring backdrop for a wide range of sporting activities and events. Whether you're looking for an activity to do before, during or after work, or simply after a day out, enjoy access to some of the most iconic sporting venues in the UK, including London Aquatics Centre, London Stadium, Copper Box Arena and Lee Valley Velopark.

The 80,000-seat, multi-use London Stadium is now the ultimate venue for sports fans, music lovers & Olympic enthusiasts alike. Home to West Ham United FC, UK Athletics and entertainment events, it's already played host to the likes of Beyonce, Foo Fighters, ACDC and more.

It's a place where memories are made, records are broken, and a passion for sport comes to life.

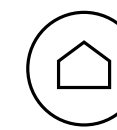


East Bank cultural quarter



MLB World Tour London Series



[STRATFORD](#)[THE BUIDLING](#)[THE CONNECTIONS](#)[SUSTAINABILITY](#)[LENDLEASE](#)[CONTACT](#)

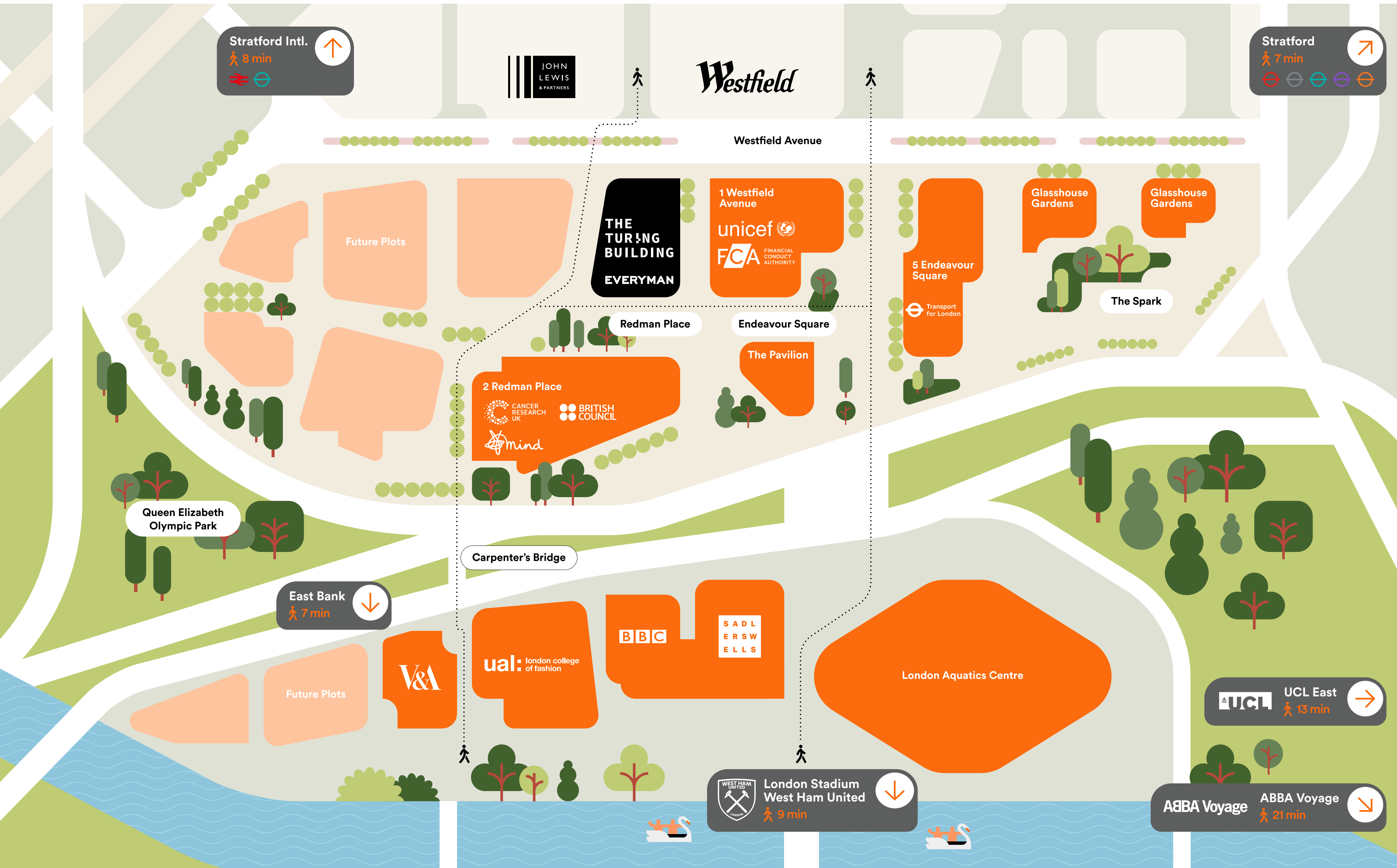
# EVERYDAY EXPERIENCES

Dining, leisure and retail, all on your doorstep. Easy and immediate access to a diverse range of dining experiences for quick bites, casual meals or fine-dining at local independent bars and restaurants in a vibrant area. Plus over 300 retailers at Europe's largest retail destination, Westfield Stratford City, is only moments away.

A lunchtime shop, after-work drinks, or a quick bite before the show, there's something for everyone.





[STRATFORD](#)[THE BUIDLING](#)[THE CONNECTIONS](#)[SUSTAINABILITY](#)[LENDLEASE](#)[CONTACT](#)

## F&B

GORDON RAMSAY  
BREAD STREET

KITCHEN & BAR

BIG EASY

FIGO  
ITALIANO

CAFE · BAR

BALANS

EST. SOHO 1987

★ PRET ★

TEMPLAR

+ more

HERA

outpost

MOWGLI

TONKOTSU

itsu  
eat beautiful

EVERYMAN

## Retail

John Lewis

THE NORTH FACE

WAITROSE  
& PARTNERS

Apple

BOSS  
HUGO BOSS

COACH

THE WHITE COMPANY  
LONDON

M&S  
EST. 1884

H&M

Boots

ZARA

FOYLES

GYMSHARK

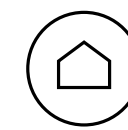
+ more



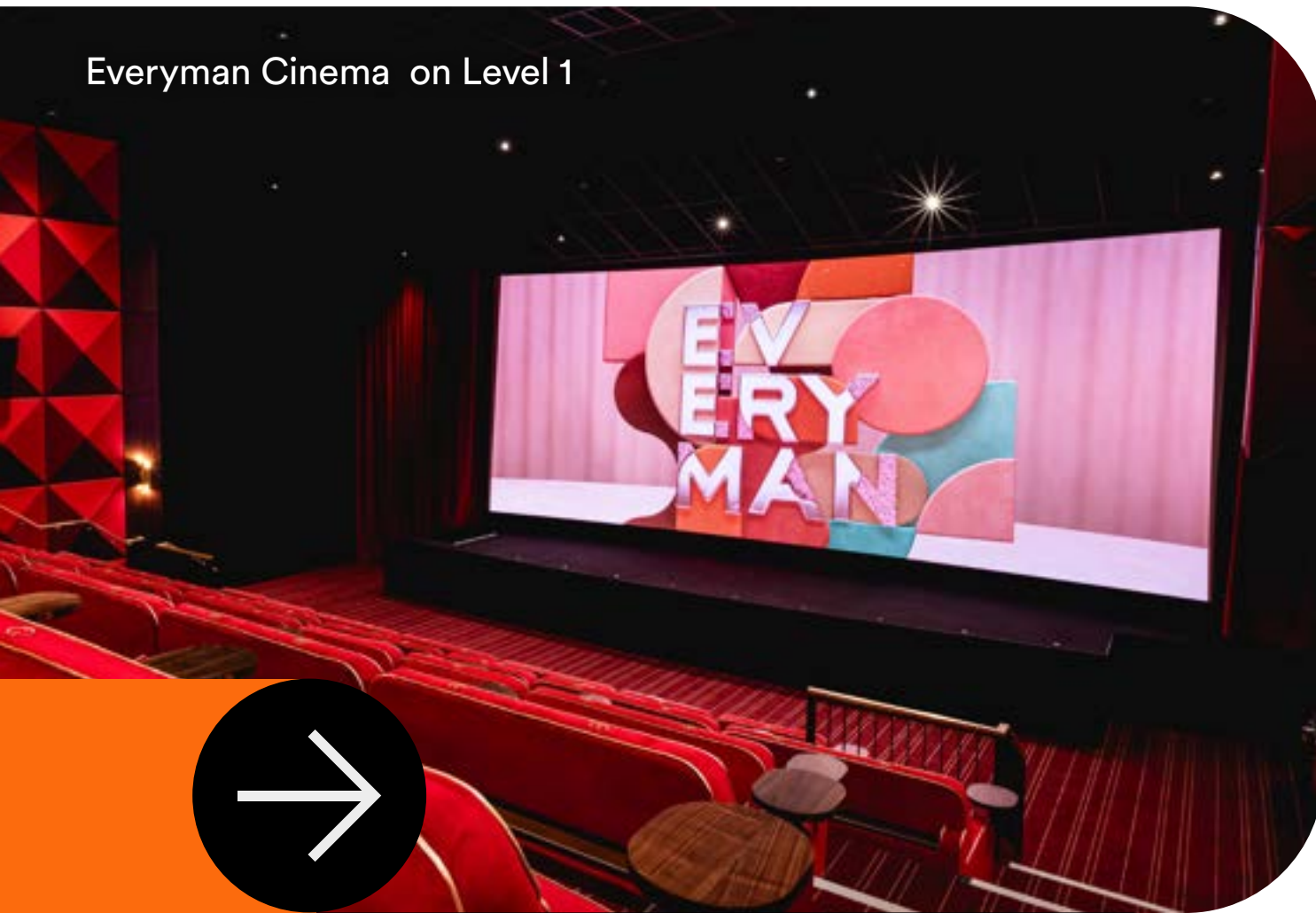


# THE BUILDING





Everyman Cinema on Level 1



WORK LIFE.

BRILLIANCE.



## The Turing Building redefines the workplace.

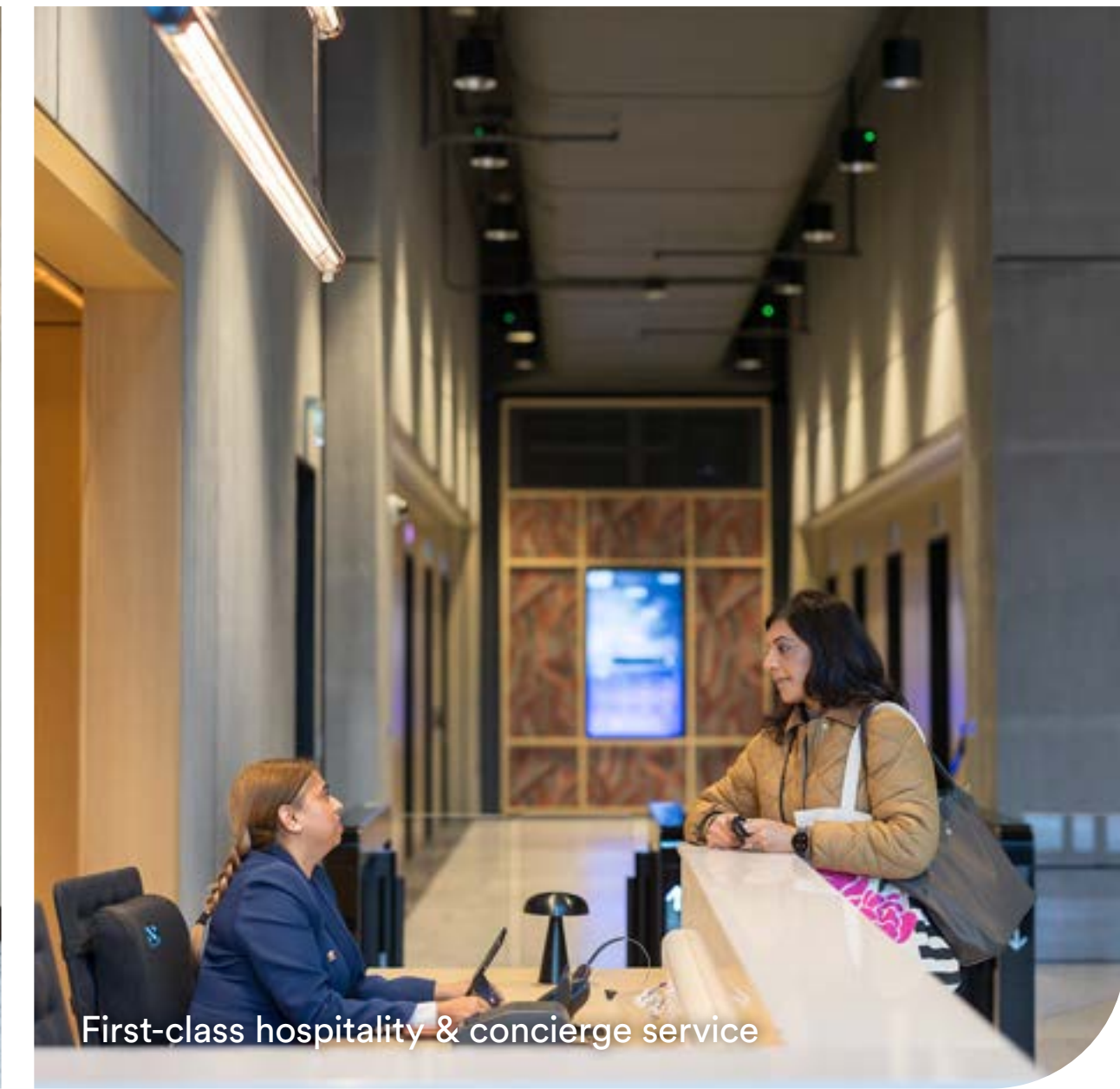
The Turing Building is a best-in-class building in one of the capital's best-connected transport hubs and surrounded by the best culture and leisure amenities in London.

Every inch of the building prides itself on sustainable, collaborative design, providing occupiers with a Grade A work environment, flexible configurations and roof terraces with expansive views across Queen Elizabeth Olympic Park, and the rest of London.

The active lobby, retail and integrated cinema, plus the exclusive occupier meeting and event space - Lounge TwentyOne - enable teams to connect and collaborate.



Active lobby with spaces for people to connect



First-class hospitality & concierge service



Library nook in lobby



Lounge TwentyOne offering expansive views across the Capital



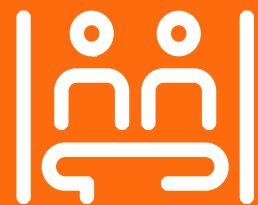
THE TURING BUILDING AT A GLANCE



3 terraces



Olympic facilities  
on your doorstep



Exclusive  
Rooftop Business  
lounge



Integrated Everyman  
Cinema & 3 diverse  
retailers



Bookable  
event space



Co-working &  
breakout areas



330 bike bays &  
29 showers with  
towel service



Changing rooms  
& lockers



Concierge



Activated lobby  
with café



EPC rating A



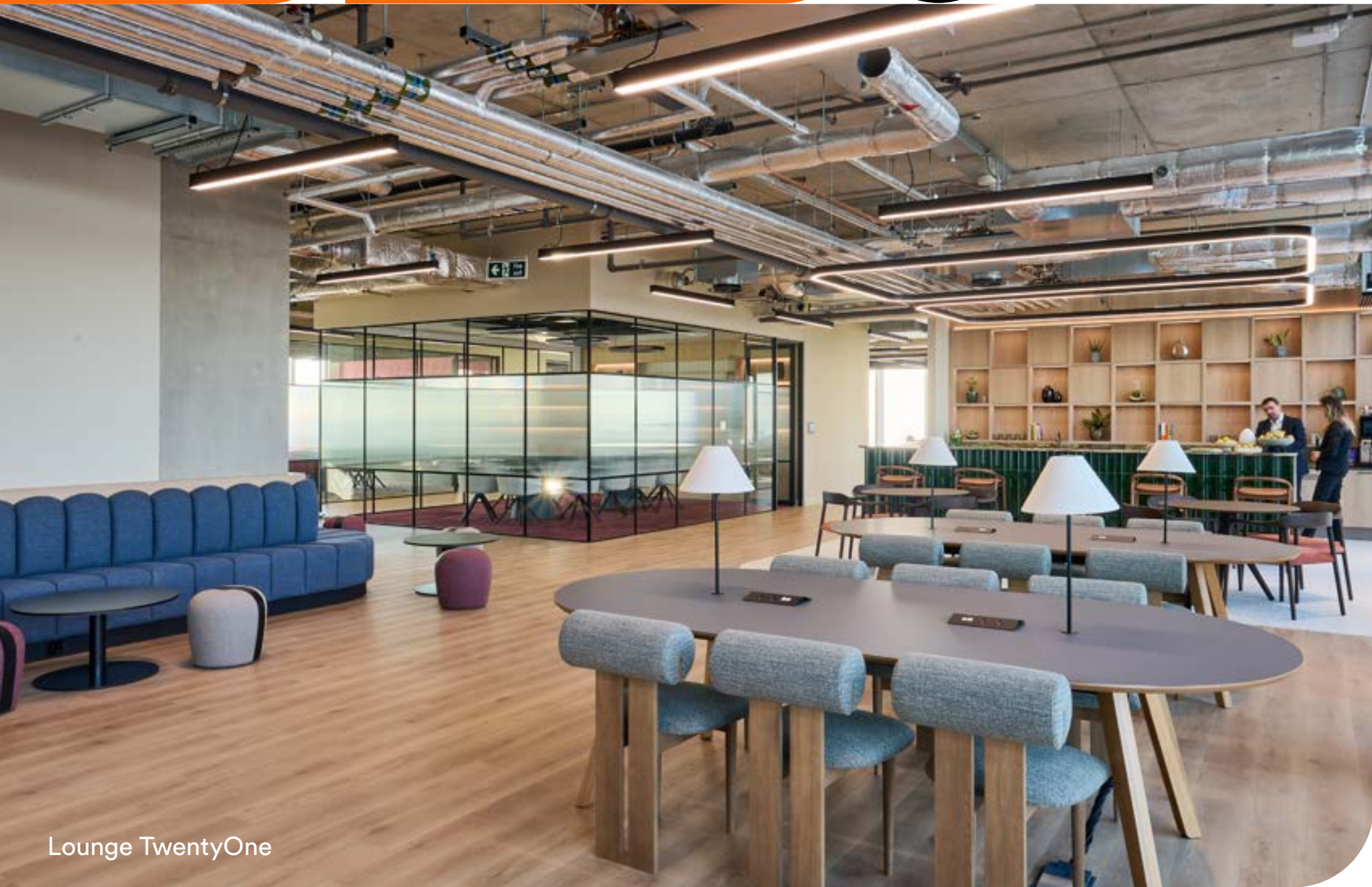
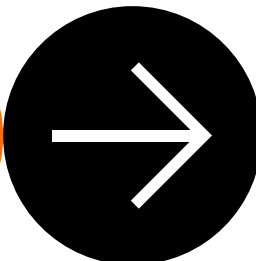
BREEAM  
Outstanding





# SCHEDULE

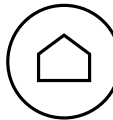
# OF AREAS



Lounge TwentyOne



Interactive



STRATFORD

THE BUIDLING

THE CONNECTIONS

SUSTAINABILITY

LENDLEASE

CONTACT

Office

Terrace

Ground Floor

350,808 sq ft

7,548 sq ft

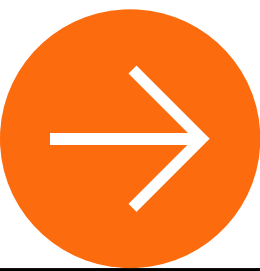
Retail

Reception

Cinema

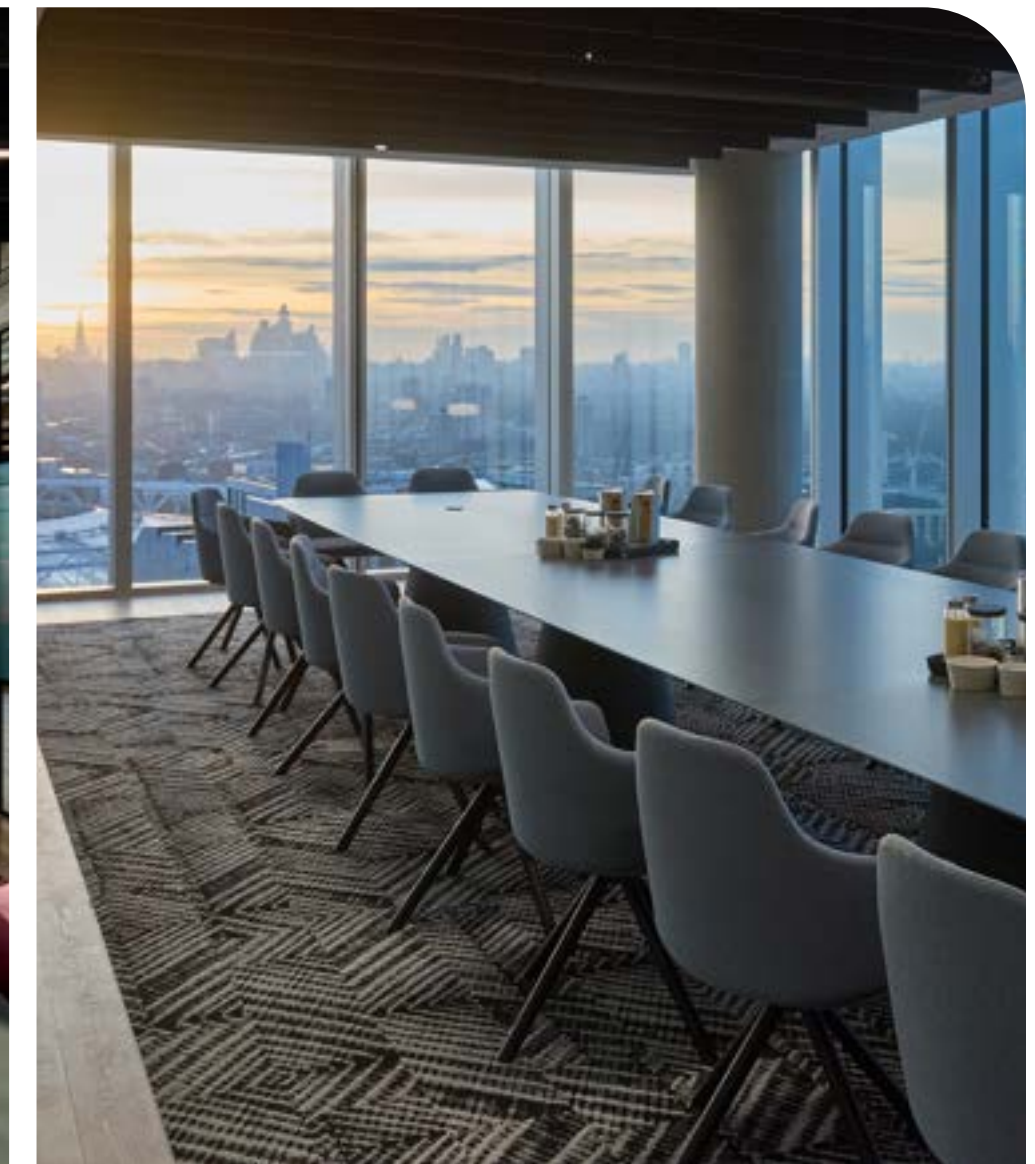
Areas are NIA



[STRATFORD](#)[THE BUILDING](#)[THE CONNECTIONS](#)[SUSTAINABILITY](#)[LENDLEASE](#)[CONTACT](#)

# LOUNGE TWENTYONE

Welcome to Lounge TwentyOne at the Turing Building – an exclusive business lounge, terrace, and event space for occupiers to enjoy all year-round.



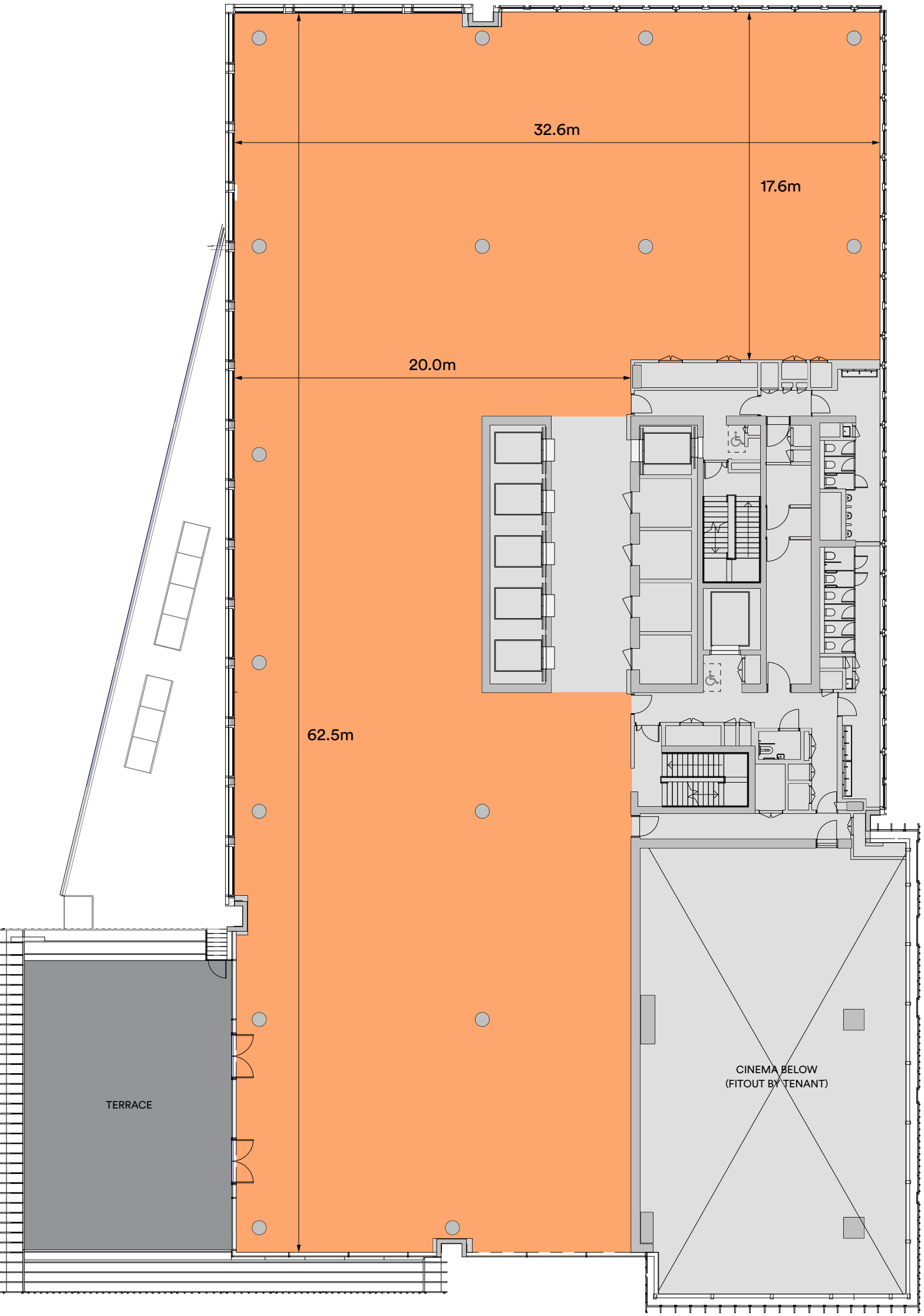






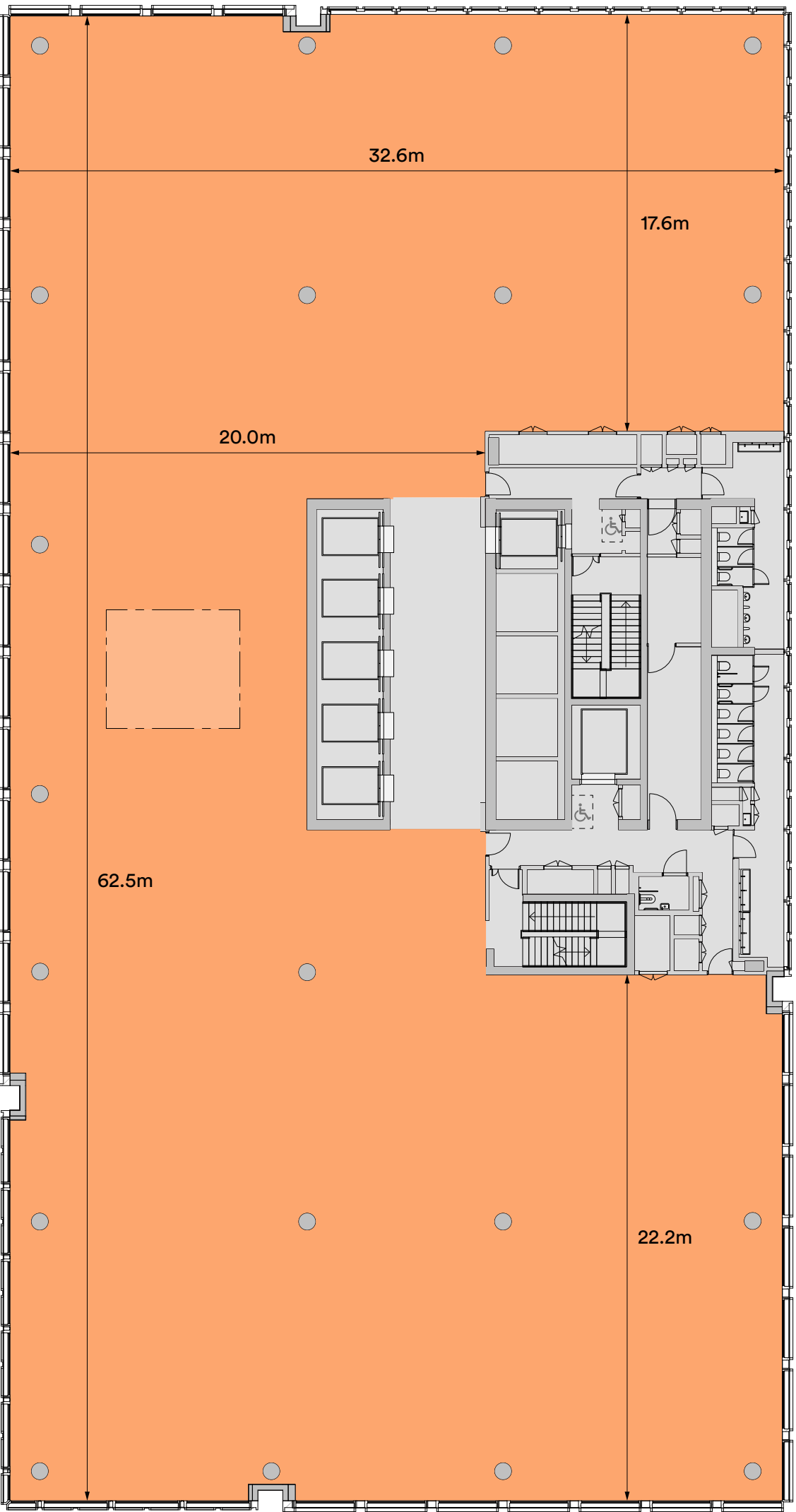


**LEVEL 02**  
**14,579 sq ft**  
**1,674 sq ft - terrace**



- Office
- Terrace
- Core

**LEVEL 10**  
**17,580 sq ft**

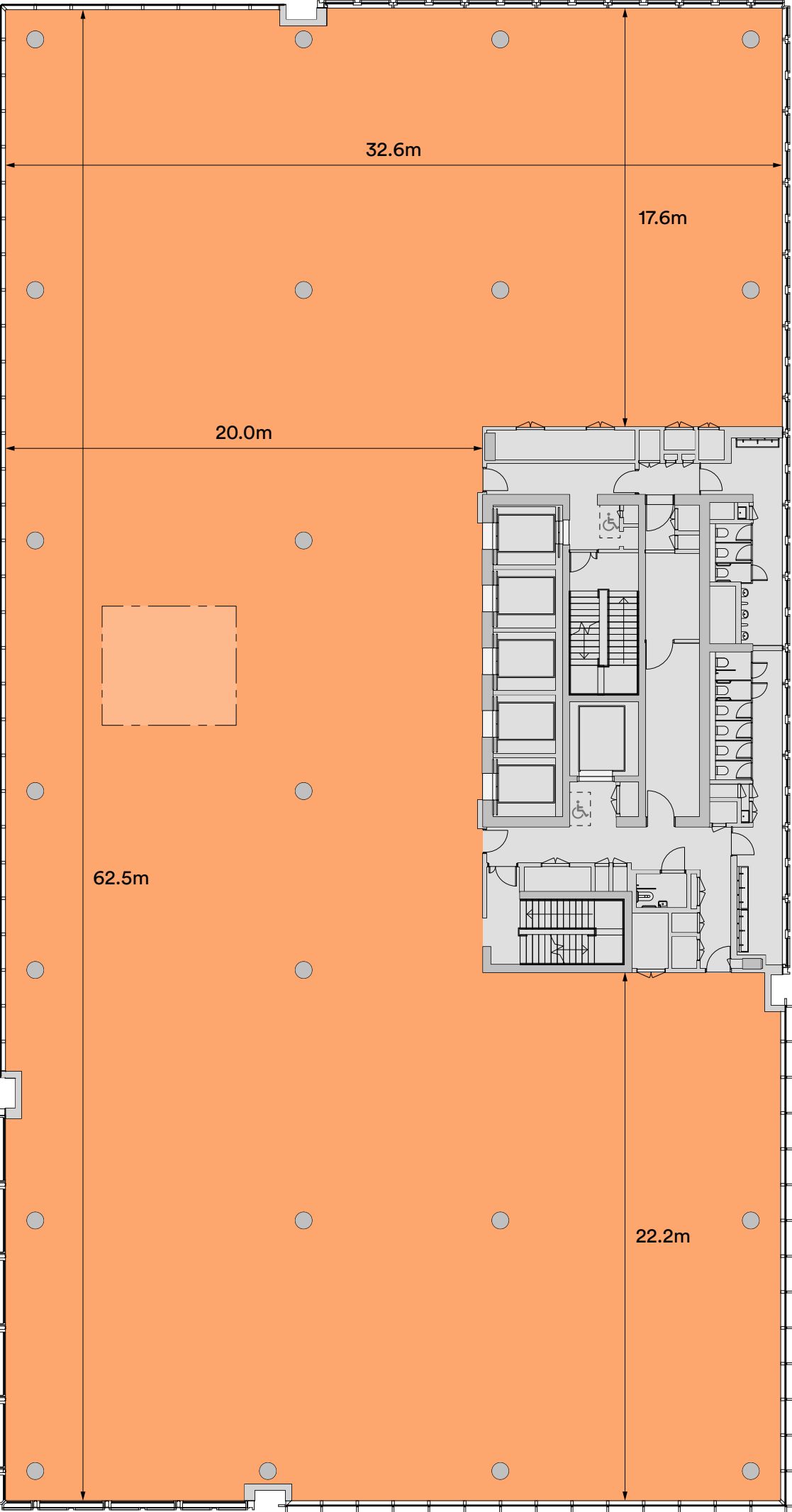


- Office
- Structural Soft Spot
- Core



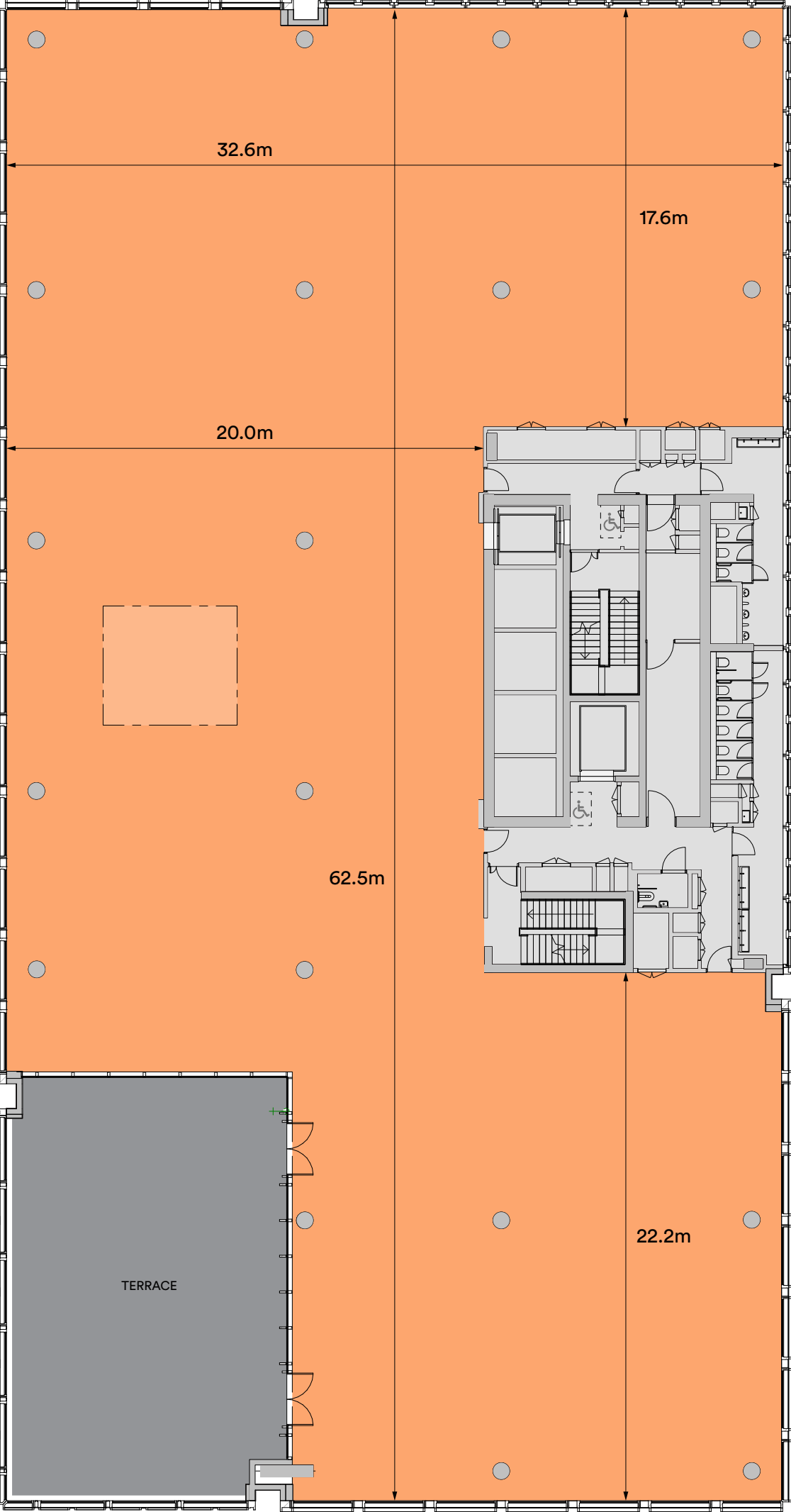


LEVEL 18  
18,692 sq ft



Office  
Core

LEVEL 19  
16,404 sq ft  
2,207 sq ft - terrace



Office  
Terrace  
Core



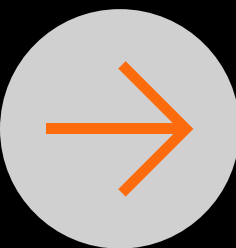


ELIZABETH LINE



**THE CONNECTIONS**



[STRATFORD](#)[THE BUIDLING](#)[THE CONNECTIONS](#)[SUSTAINABILITY](#)[LENDLEASE](#)[CONTACT](#)

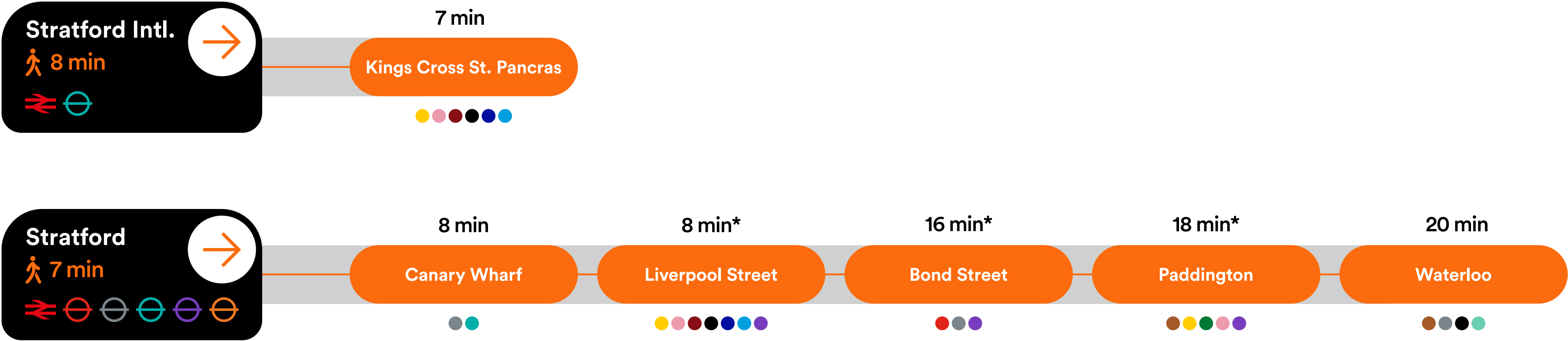
# CLOSER BY THE MINUTE



One of the best-connected destinations in London, Stratford is closer than you think.

The Elizabeth Line has transformed London. With lightning-fast connections to Liverpool Street, Tottenham Court Road and Paddington in under 20 minutes, and Heathrow in less than an hour. The Javelin train can have you in Kings Cross in just seven minutes. Add in National Rail, DLR, Central and Jubilee lines and getting into central London couldn't be easier.

If you're looking to venture further afield, East Anglia, Essex and the South East are all within easy reach of Stratford. You could even make it to the coast, with direct trains getting you there in under an hour.



\*Via Elizabeth Line

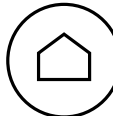




# SUSTAINABILITY

Discover green space on your doorstep





STRATFORD

THE BUIDLING

THE CONNECTIONS

SUSTAINABILITY

LENDLEASE

CONTACT



# DESIGNED TO BE SUSTAINABLE

Many things make an office sustainable, but at the forefront is enhancing the wellbeing and happiness of those who work there.

Through exceptional workspace design – including flexible floorplans, natural light, better air quality, outdoor working spaces, and layouts that foster collaboration – The Turing Building makes people's wellness a priority.



Upfront embodied carbon  
(A1-A5) target 'C'



In construction  
(via offsets)



Carbon in operation  
(Scopes 1&2)



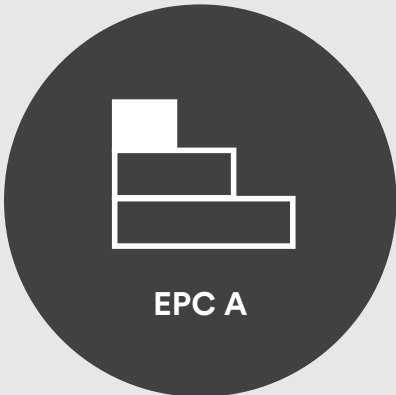
Carbon in operation (Scope  
3) - office occupiers only



WELL Gold



Targeting  
WiredScore Platinum



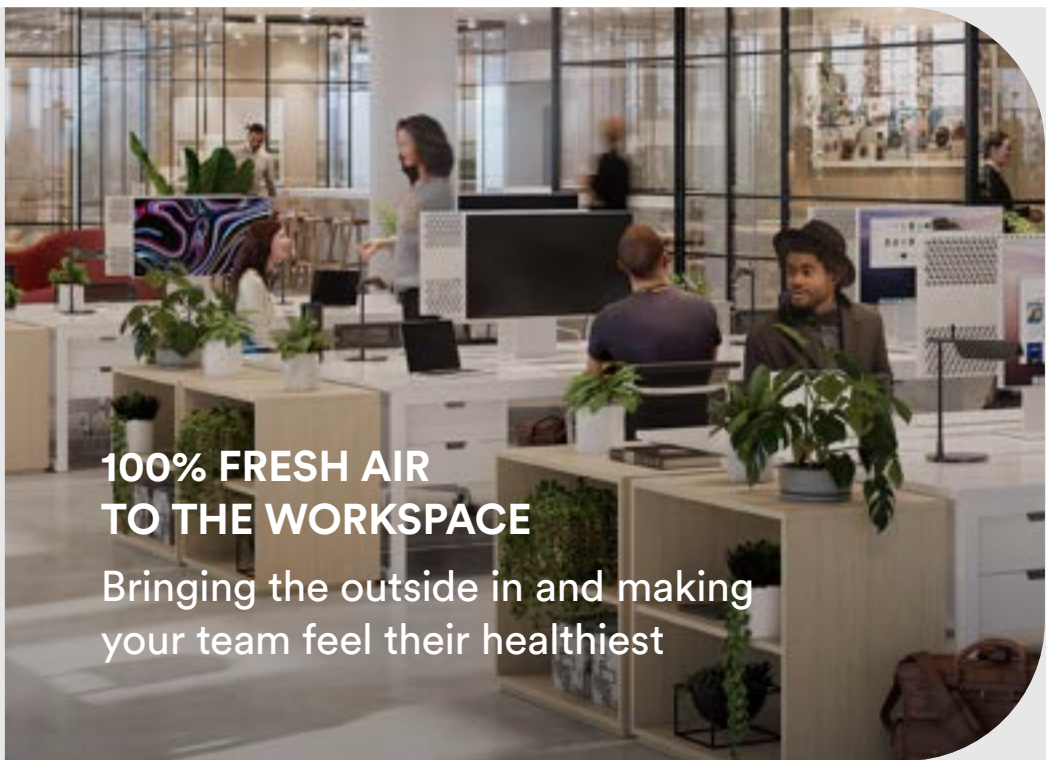
EPC A



Targeting  
WiredScore Platinum

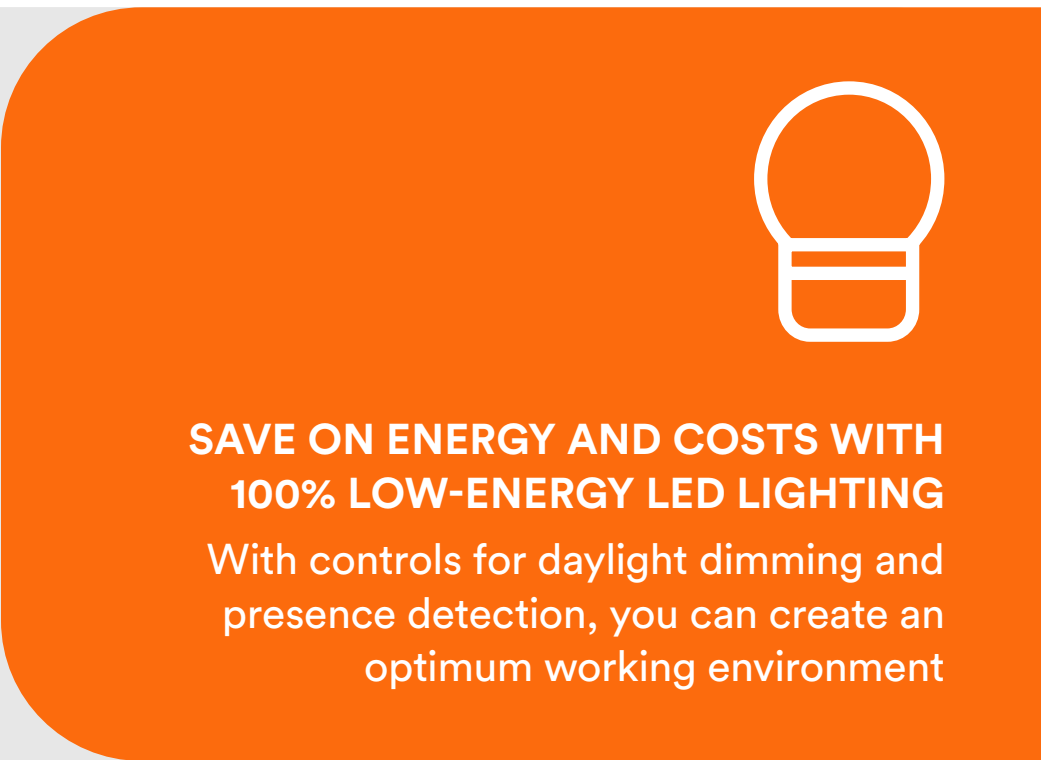


Nabers UK 4.0\*+



100% FRESH AIR  
TO THE WORKSPACE

Bringing the outside in and making  
your team feel their healthiest



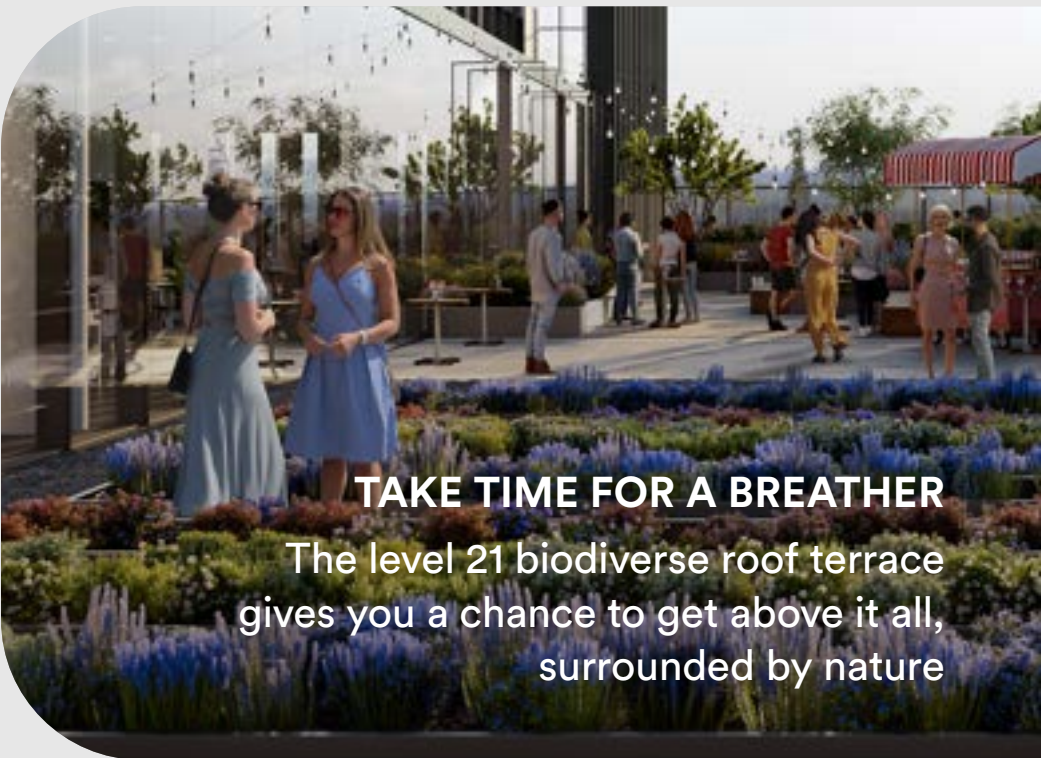
SAVE ON ENERGY AND COSTS WITH  
100% LOW-ENERGY LED LIGHTING

With controls for daylight dimming and  
presence detection, you can create an  
optimum working environment



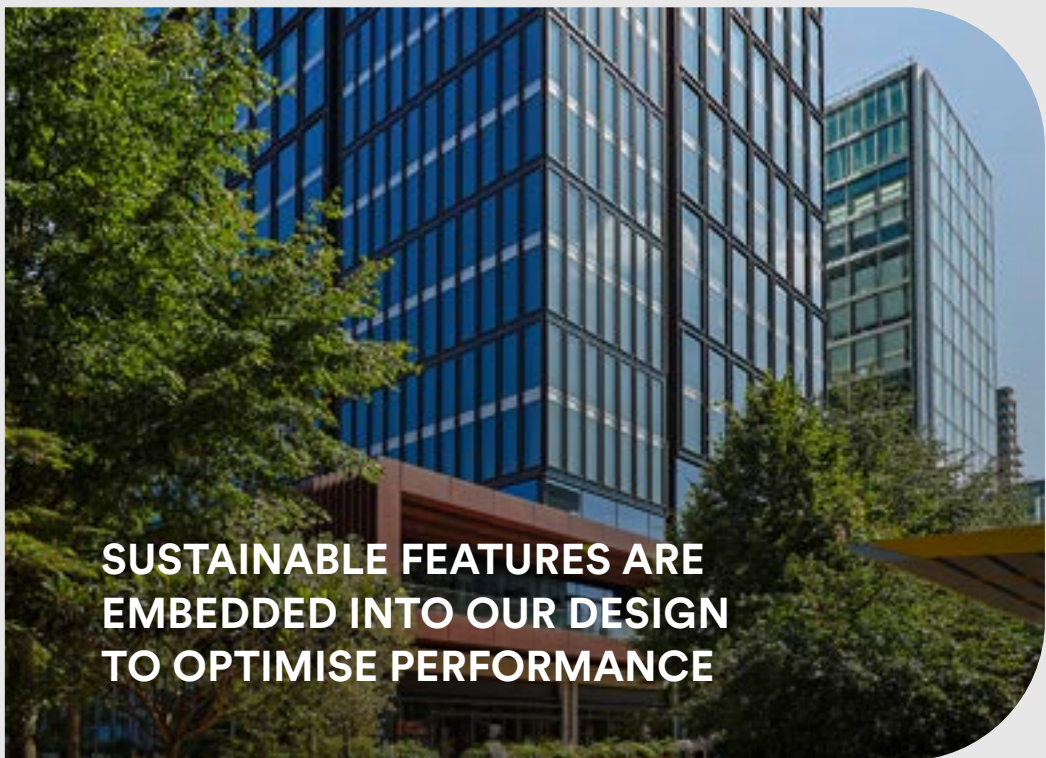
HELPING YOUR BUSINESS TO  
ACHIEVE ITS NET ZERO CARBON GOALS

With +30% reduction in embodied carbon,  
90m<sup>2</sup> onsite solar panels and 57% reduction  
in water demand



TAKE TIME FOR A BREATHER

The level 21 biodiverse roof terrace  
gives you a chance to get above it all,  
surrounded by nature



SUSTAINABLE FEATURES ARE  
EMBEDDED INTO OUR DESIGN  
TO OPTIMISE PERFORMANCE



SUSTAINABLE AND FUTURE  
PROOFED DESIGN FOR LONG  
TERM RESILIENCE

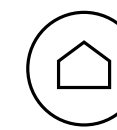




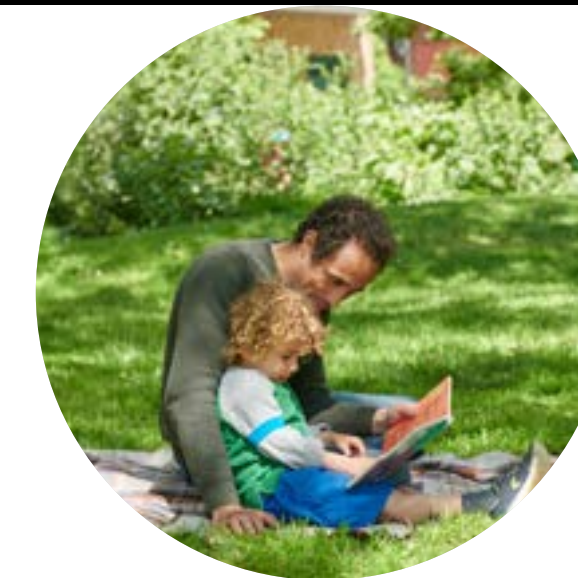
**LENDLEASE**

The Turing Building topping out





# PLACES FOR EVERYONE



**Lendlease helped deliver the Olympic Village for 2012, and is continuing to influence Stratford's future.**

With a focus on customers, diversity, and sustainability, Lendlease shapes cities, connects communities and delivers workplaces fit for evolving businesses. Our global portfolio stretches from Sydney's International Towers to the 9/11 Memorial and Museum in New York, while, closer to home, we have developed Google's Kings Cross headquarters, the BBC's London expansion and Manchester's Media City.

Today, Lendlease is determined to create a greener future, and Stratford Cross is in an urban regeneration project that differs from many others across the city. Leading with sustainability, the development encompasses workplaces, green space, homes and retail to create a destination which blurs the lines between hospitality, residential and commercial.

Lendlease has been central to **Stratford's** transformation

**SHIFT**  
Collaboration and inspiration for a better urban future



Lendlease proudly works with local community partners, including...

Creative Wick  
Music Academy  
London Youth Rowing

Open City Accelerate  
Echo Civic

Find out more about our **community initiatives**



# CONTACT



STRATFORD

THE BUIDLING

THE CONNECTIONS

SUSTAINABILITY

LENDLEASE

CONTACT

For more information please contact:



**Angus Goswell**  
07717 343 151  
angus.goswell@knightfrank.com

**Mike Voller**  
07739 763 699  
mike.voller@knightfrank.com

**Lucy Dowling**  
07557 310 233  
lucy.dowling@knightfrank.com

**Abby Dwan**  
07976 084 158  
abby.dwan@knightfrank.com



**Fred Hargreaves**  
07909 684 413  
fred.hargreaves@realestate.bnpparibas

**James Strevens**  
07824 414 682  
james.strevens@realestate.bnpparibas

**Alastair Robinson**  
07717 504 438  
alastair.robinson@realestate.bnpparibas

**Katrina Love**  
07818 290 253  
katrina.love@realestate.bnpparibas



**Richard Howard**  
07764 810 217  
richard.howard@cbre.com

**Lizzie Boswell**  
07570 204 519  
lizzie.boswell@cbre.com

**David Wilson**  
07584 339 242  
david.t.wilson@cbre.com



**Guy Thomas**  
07702 678 927  
guy.thomas@lendlease.com

The information and data contained in this brochure has been prepared by Lendlease in April 2025 solely as a guide and does not constitute advice. Whilst every effort has been made to provide accurate and complete information, the information contained in this brochure has been prepared in good faith and with due care, and no representation or warranty (express or implied) is made as to the accuracy, adequacy or reliability of any statements, estimates, opinions, plans, diagrams, images or other information contained in this brochure. Lendlease reserves the right to change the contents of this brochure at any time. To the maximum extent permitted by law, joint venture partners Lendlease and CPPIB and their related bodies corporate and respective directors, officers, employees, agents and advisers disclaim all liability and responsibility (including without limitation any liability arising from fault or negligence) for any direct or indirect loss, damage, cost or expense which may be suffered through the use of or reliance on anything contained in or omitted from the information contained in this brochure.

