

THE TURING BUILDING



**SPACE
FOR THE
BIGGEST IDEAS.**

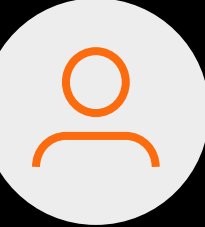


**STRATFORD
CROSS**

 **lendlease**

YOUR NEXT

CAMPUS



Join the Stratford ecosystem



London #1 student city
in the world since 2018
– QS best cities ranking

READY TO GO →



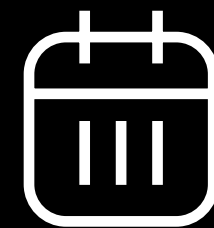
THE TURING BUILDING



We're ready for you to open your doors to your 2025 intake



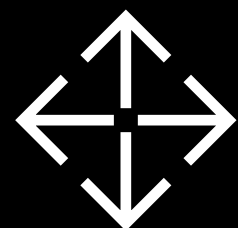
Dual education and office use already consented



Building completes summer 2024



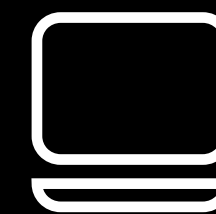
Opportunity to create a building within a building with your own entrance, reception and lifts



Large, flexible floorplates for easy divisibility



Base build density at 1:8 with enhancements available



Digital enabled building targeting WiredScore Platinum



The benefits of a premium Grade A, sustainable building without the premium rents



A PLACE TO CLUSTER AND GROW

With consent for educational use already secured, The Turing Building offers the opportunity to create a world class learning environment in the heart of East London's educational and cultural ecosystem.



Self-contained entrance and lobby

DON'T JUST TAKE OUR WORD FOR IT



UCL

“ We needed somewhere where it would allow us space to grow and to do the kinds of activities that are quite difficult in a very central London location. There are lots of benefits to us being in Stratford. We will be on a beautiful park for students and staff to work and live and to study. Stratford has such a dynamic young population, and of course as a university we're all about opportunities for young people.”

Helen Fisher, UCL East's Operations Lead



UAL

“ When we were looking to bring our six buildings into a single site there was nowhere else we wanted to look. Stratford speaks to us as a place of young people, a place of great diversity that has a natural empathy and energy which we associate with. It will provide a critical mass of creative activity that allows us to better articulate what fashion is and what fashion can be both for London and also as a global hub.”

**Gavin Jenkins, Head of Technical Services
London College of Fashion, UAL**

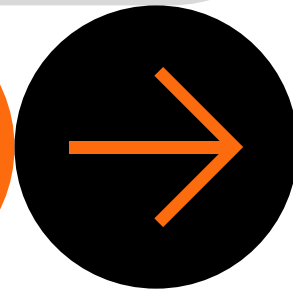


Unite Student Housing

“ We view Stratford as an ideal location for our business thanks to Stratford's growth as a major student, employment and leisure hub.”

Joe Lister – CFO, Unite Student Housing

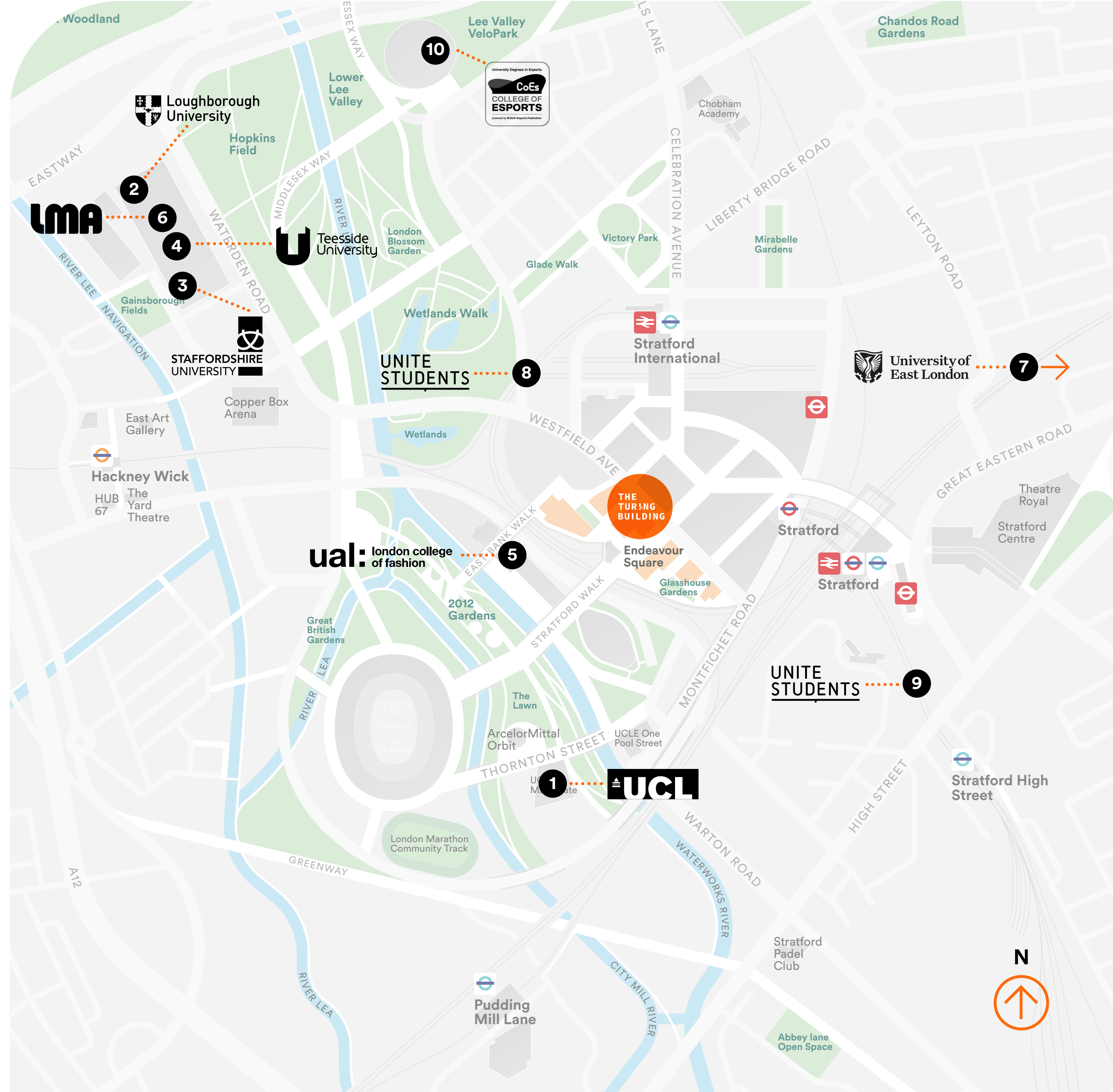
FUTURE SHAPERS



Stratford, in the heart of East London, is fast becoming the place to be for educational institutions.

World-renowned names including University College London and London College of Fashion have moved here to be part of this thriving, dynamic, collaborative community.

Choosing Stratford Cross puts you at the centre of this cluster where learning, research and enterprise intersects with culture and extraordinary innovation.



DESIGNED TO MAKE A DIFFERENCE



Create a dynamic and interconnected space for your students, faculty and staff.

With education consent already granted, your space can have its own front door, span multiple floors – some with private terraces – and benefit from the building's best-in-class sustainability credentials.

- 1 Flexibility for self-contained reception
- 2 Active lobby with concierge service and cafe opportunity
- 3 End of trip facilities
 - 330 bike bays
 - 430 lockers
 - 15 showers
 - Ramp access direct from street
 - Towel service
 - Bike repair station
- 4 Contactless, secure lift access through digital wallet
- 5 Everyman cinema
- 6 Designed to comfortably fit approximately 200 people on each floor at a rate of 1 person per 8 sq m
- 7 Interconnectivity between floors made easy through structural soft spots
- 8 Minimum 2.75m floor-to-ceiling heights throughout
- 9 Biodiverse rooftop garden and rooftop solar panels
- 10 External terraces available on levels 2, 19 and 21



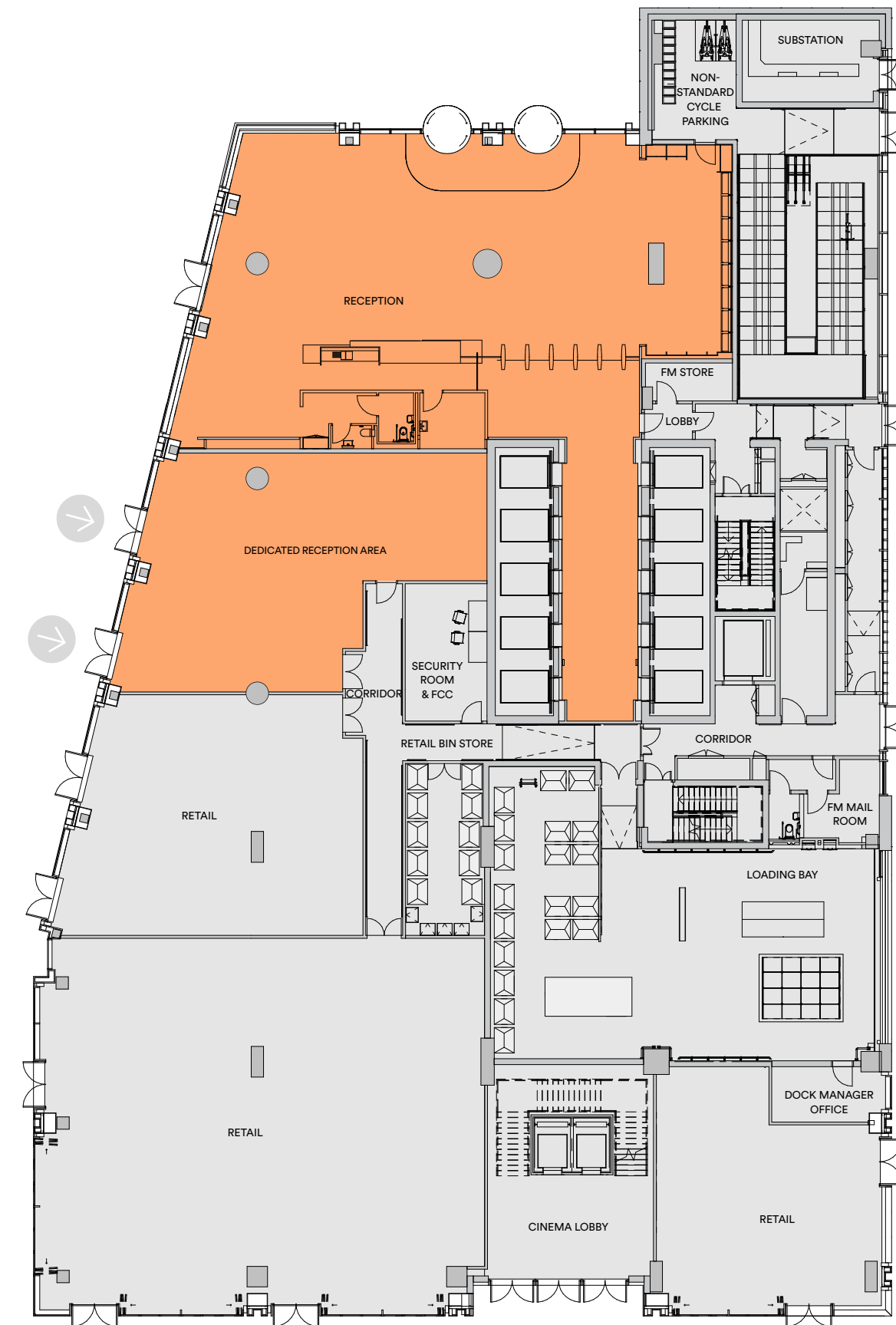
SCHEDULE OF AREAS

Office	Terrace		
10,580 sq ft	3,667 sq ft		Level 21
16,393 sq ft			Level 20
16,394 sq ft	2,207 sq ft		Level 19
18,686 sq ft			Level 18
18,675 sq ft			Level 17
18,385 sq ft			Level 16
18,675 sq ft			Level 15
18,288 sq ft			Level 14
18,657 sq ft			Level 13
17,558 sq ft		Up to 200,000 sq ft available for education use from ground floor to level 12	Level 12
17,557 sq ft			Level 11
17,534 sq ft			Level 10
17,534 sq ft			Level 09
17,534 sq ft			Level 08
17,524 sq ft			Level 07
17,513 sq ft			Level 06
17,513 sq ft			Level 05
17,505 sq ft			Level 04
17,491 sq ft			Level 03
14,564 sq ft	1,674 sq ft		Level 02
5,328 sq ft			Level 01
Ground Floor		Retail	Reception
349,888 sq ft	7,548 sq ft		Cinema

*NIA (subject to final measurement)

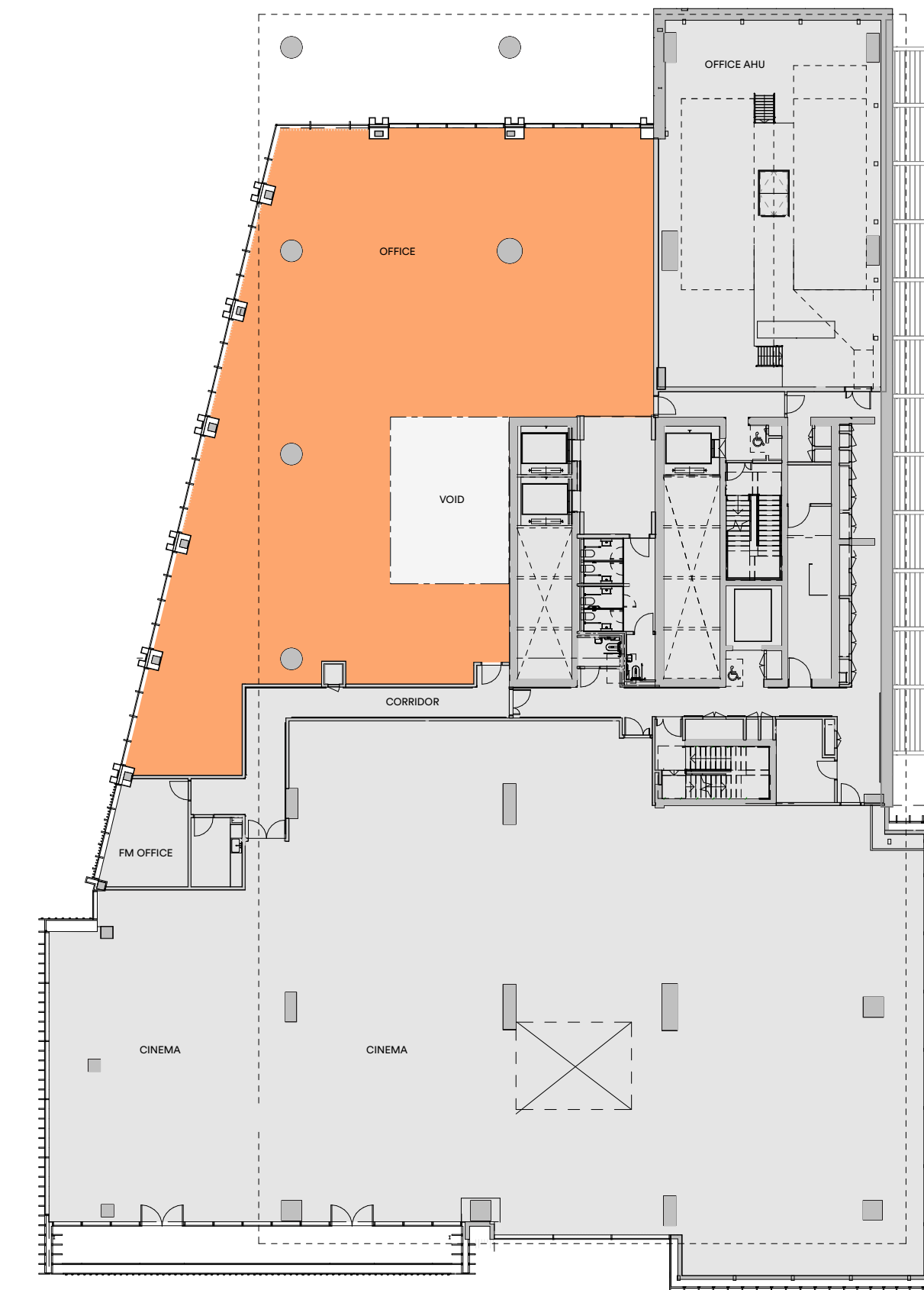
ARRIVAL EXPERIENCE

LEVEL 00
1,770 sq ft*



- Reception
- Retail, Core and Back of House
- * Dedicated Reception Area

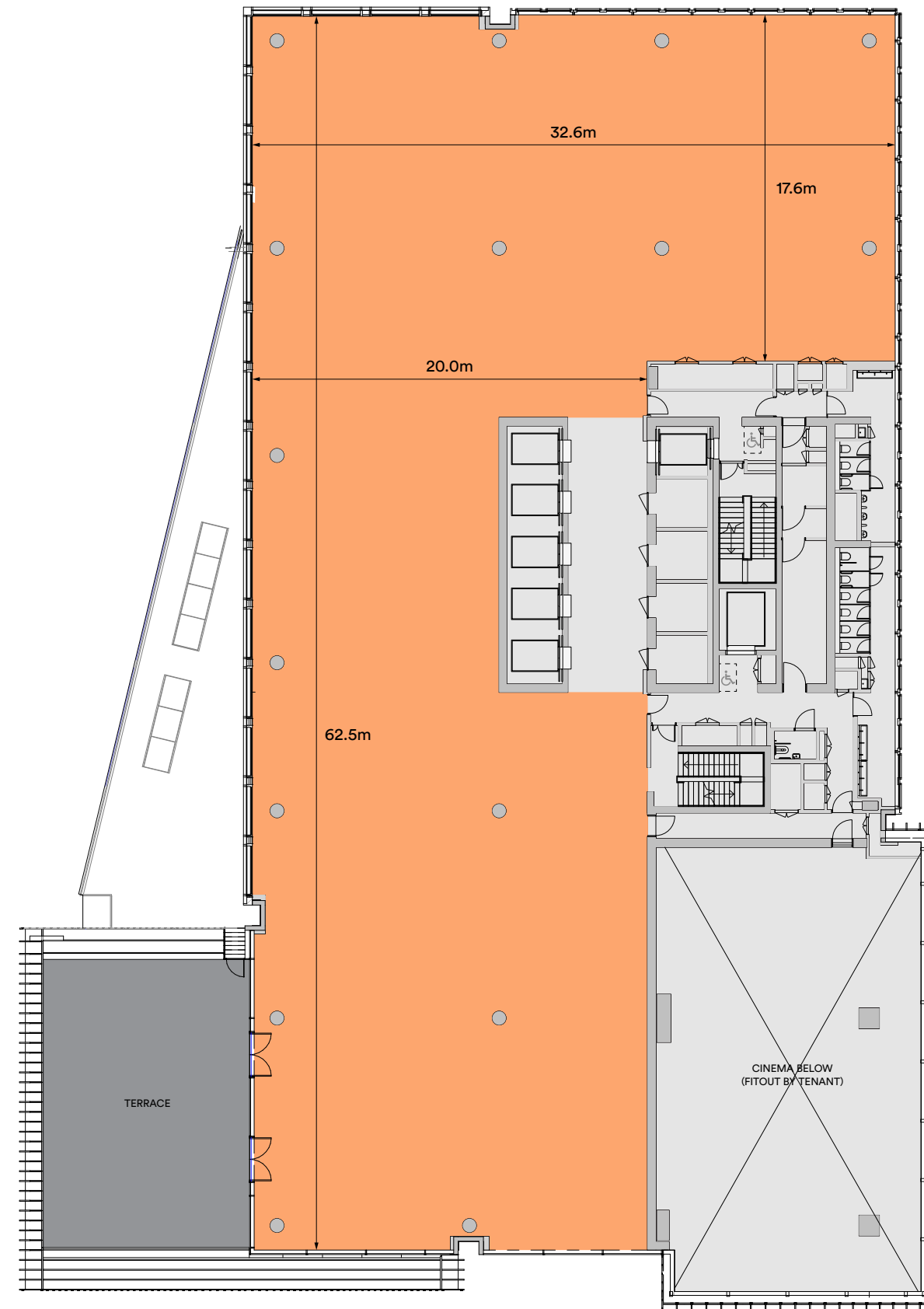
LEVEL 01
5,328 sq ft



- Workspace
- Core

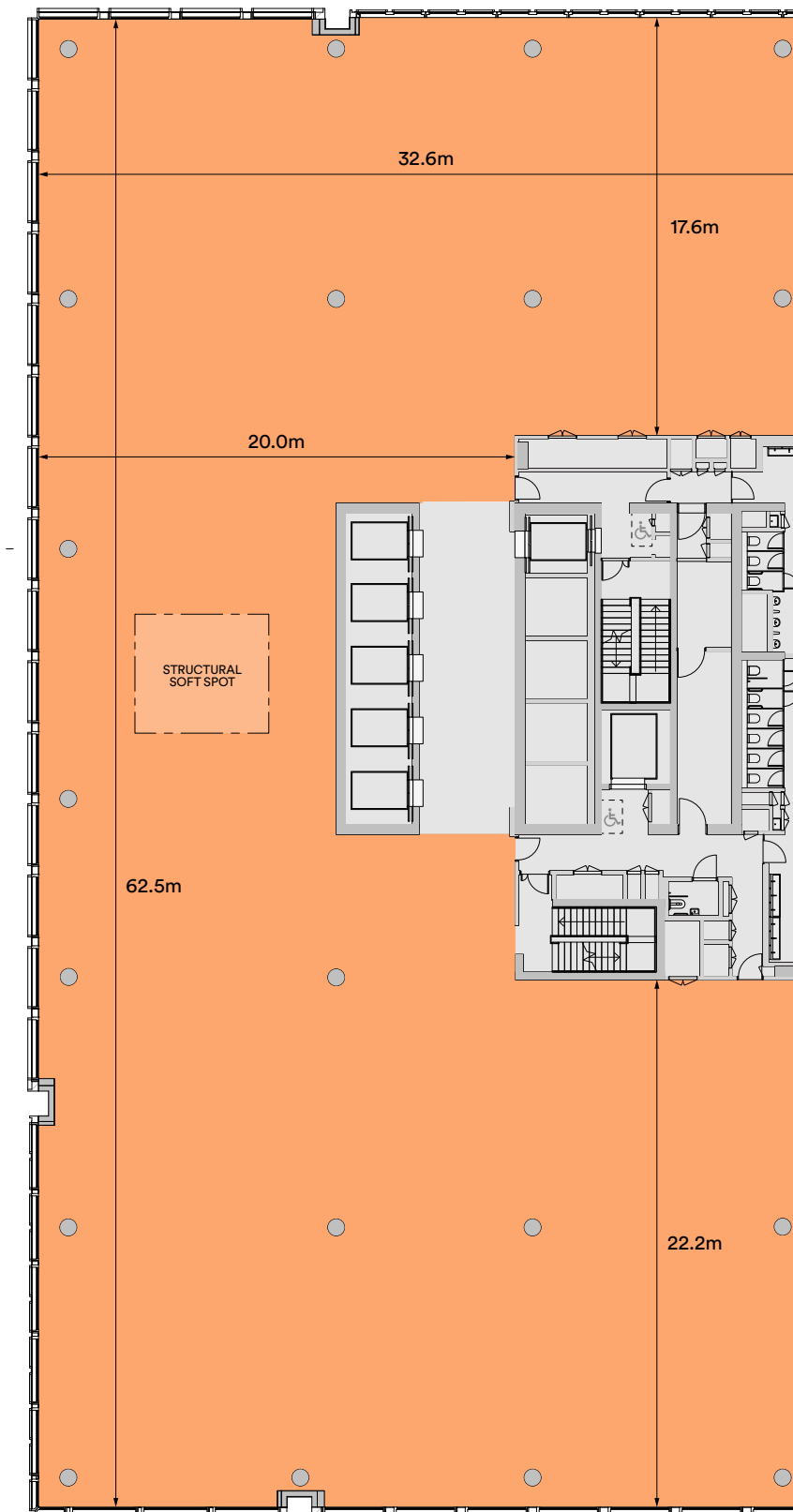
FACULTY SPACE

LEVEL 02
14,564 sq ft
1,674 sq ft - terrace



- Workspace
- Terrace
- Core

LEVEL 03
17,491 sq ft



- Workspace
- Core

EXPLORE

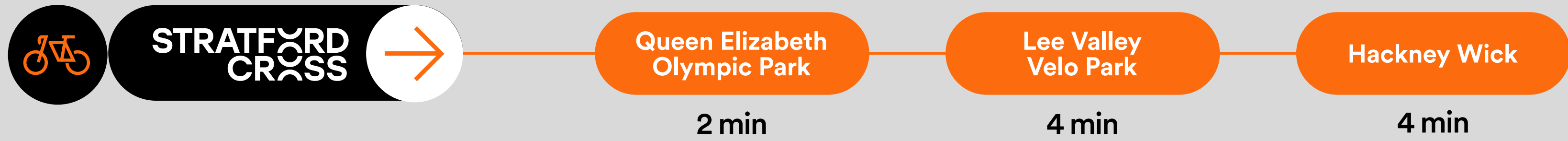
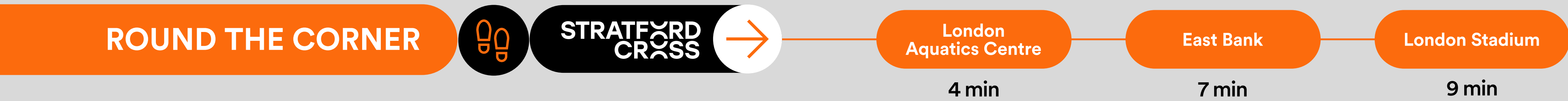
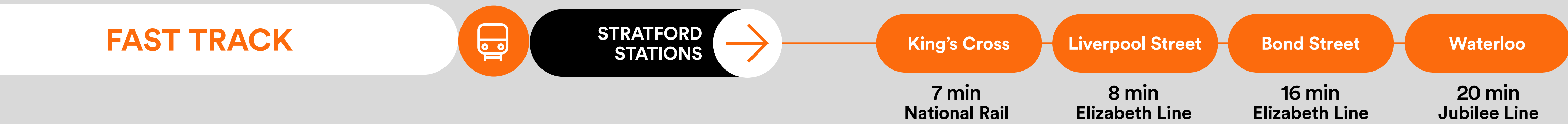
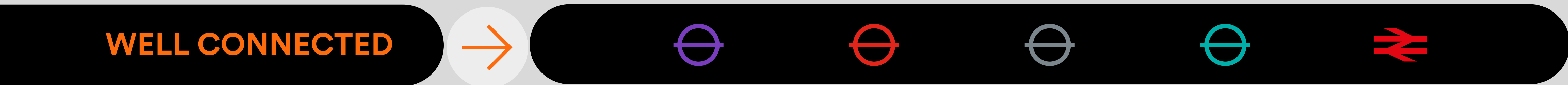
SOMETHING



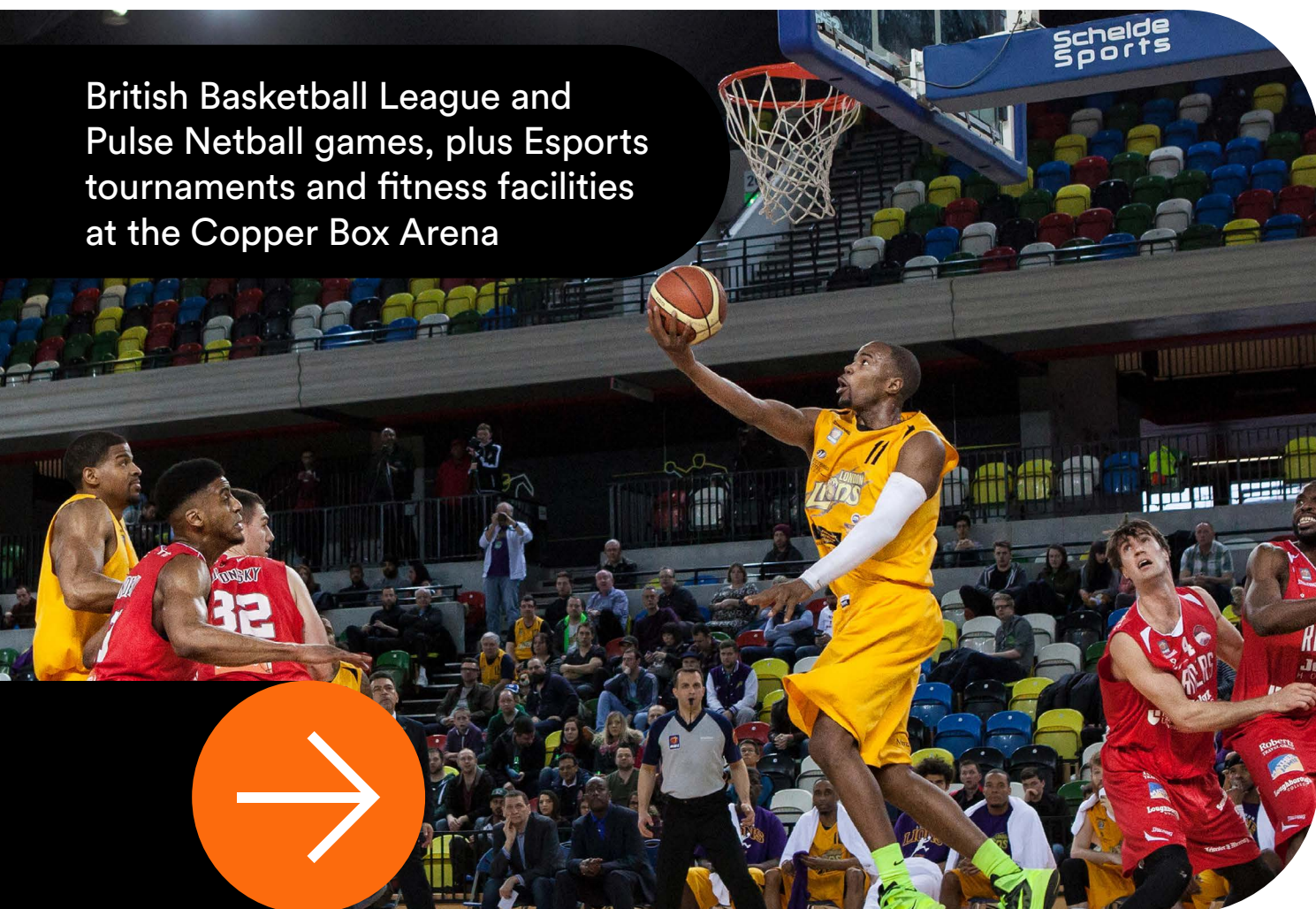
NEW EVERY DAY

→ CLOSER BY THE MINUTE

One of the best-connected destinations in London, Stratford is closer than you think. Whether the head of your partner university is flying in for a visit, the faculty professors need an easy commute or your students want to explore London's key hubs, Stratford Cross has you covered.



British Basketball League and Pulse Netball games, plus Esports tournaments and fitness facilities at the Copper Box Arena



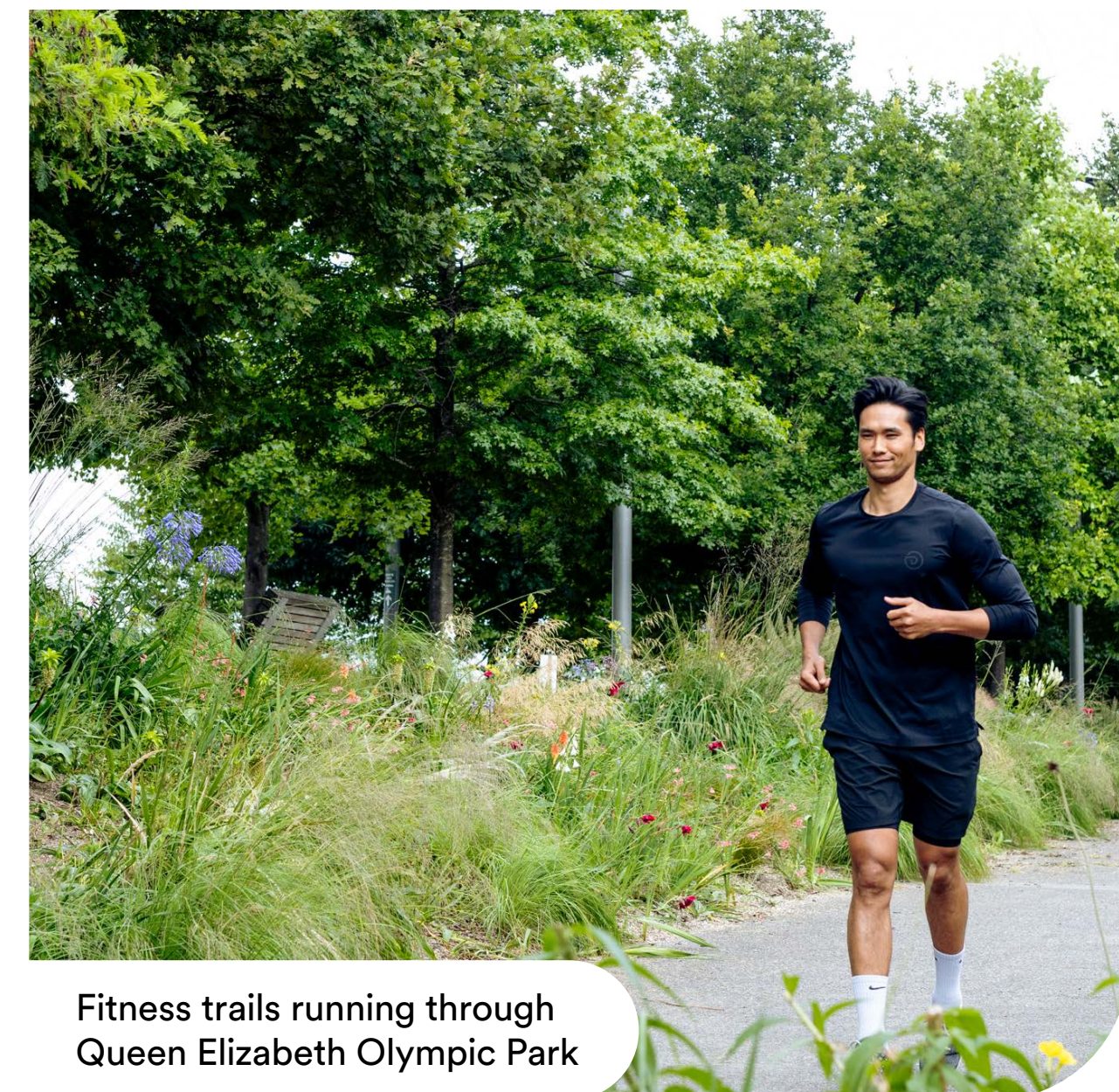
UNLIMITED

EXPERIENCES

At Stratford, thanks to the London 2012 Olympic and Paralympic games, we have a concentration of world-class facilities which are open to everyone.



Premier League football at the London Stadium



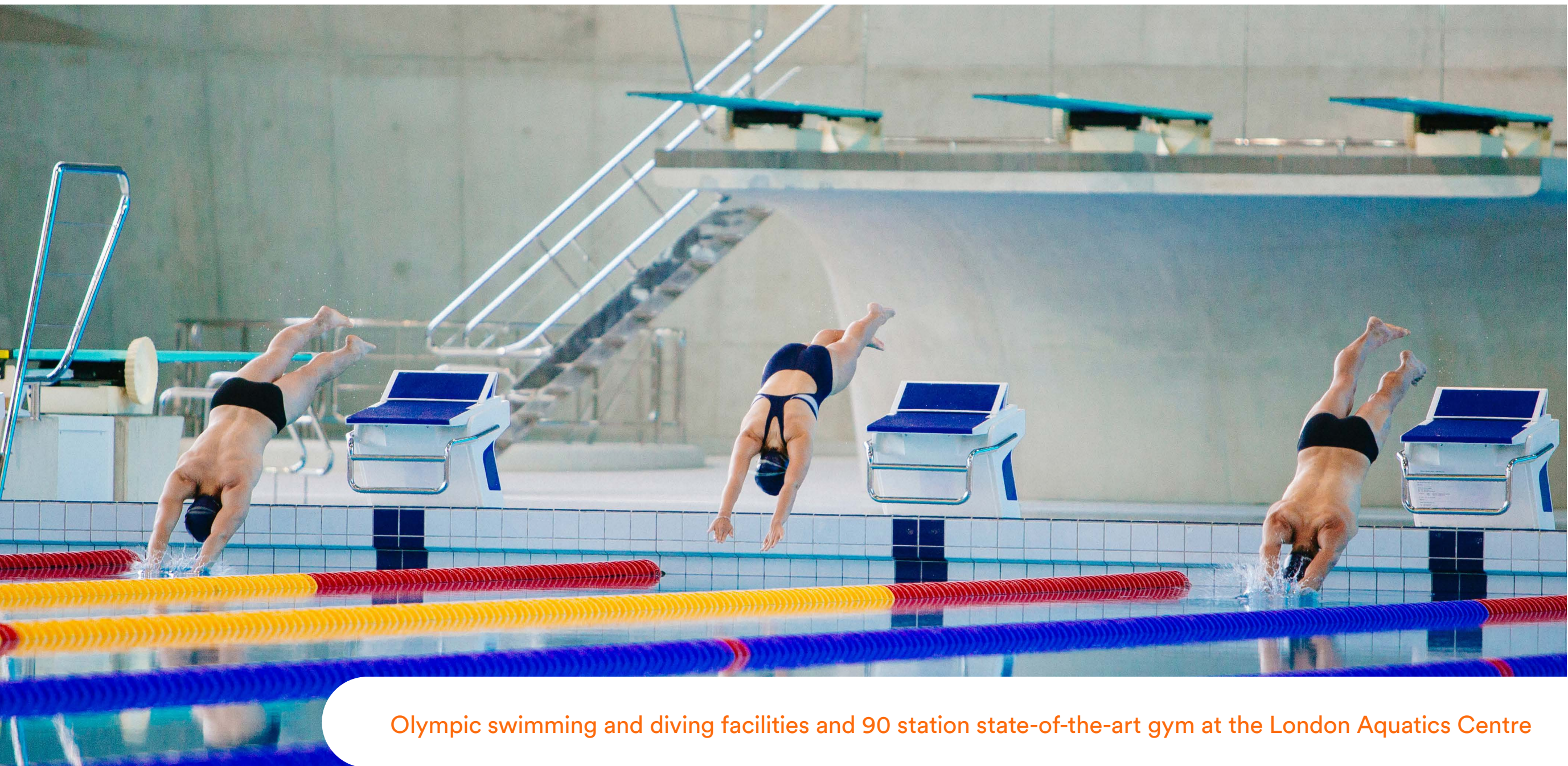
Fitness trails running through Queen Elizabeth Olympic Park



Get together for 5, 7 or 11-a side football at Chobham Academy's pitches



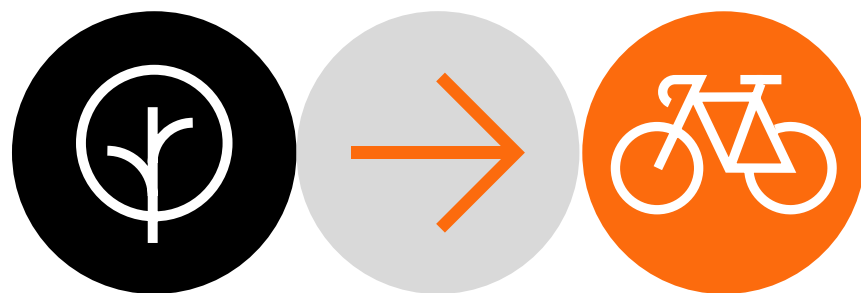
Explore the great outdoors along our historic waterways



Olympic swimming and diving facilities and 90 state-of-the-art gym at the London Aquatics Centre

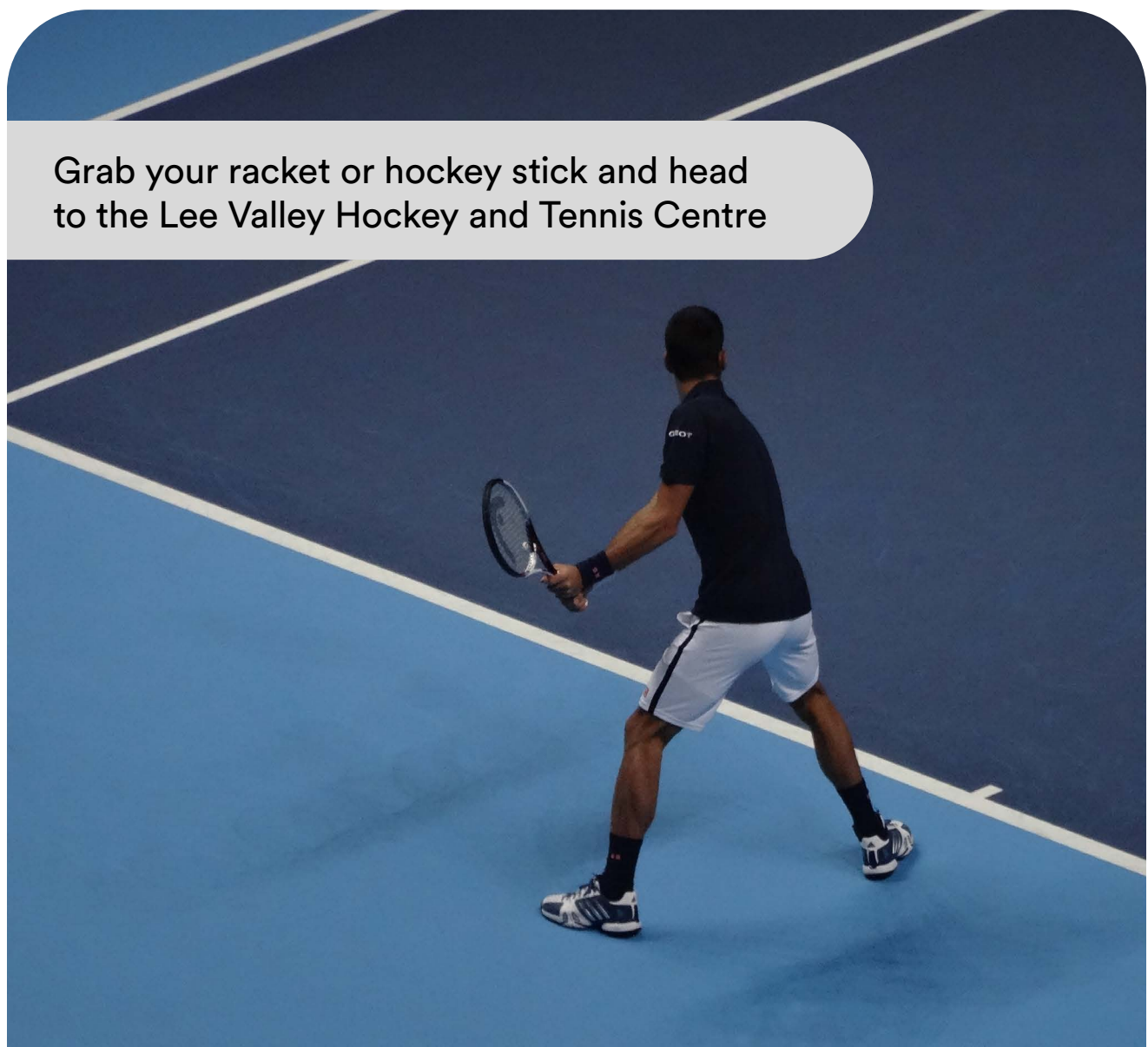


Ride on the track where Team GB won seven gold medals at the 2012 Olympics



THE PLACE

TO BE

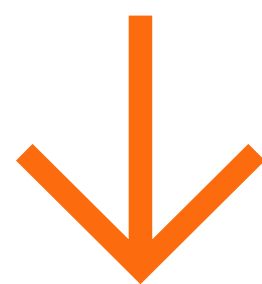


Grab your racket or hockey stick and head to the Lee Valley Hockey and Tennis Centre



Join London's only dedicated padel club at Stratford Padel Club

CONTACT



For more information please contact:



Felicity Ranger
Office Leasing Manager
07525 593 550
felicity.ranger@lendlease.com

Agents details:



Angus Goswell
07717 343 151
angus.goswell@knightfrank.com

Mike Voller
07739 763 699
mike.voller@knightfrank.com

Lucy Dowling
07557 310 233
lucy.dowling@knightfrank.com

Abby Dwan
07976 084 158
abby.dwan@knightfrank.com



Fred Hargreaves
07909 684 413
fred.hargreaves@realestate.bnpparibas

James Strevens
07824 414 682
james.strevens@realestate.bnpparibas

Alastair Robinson
07717 504 438
alastair.robinson@realestate.bnpparibas

Katrina Love
07818 290 253
katrina.love@realestate.bnpparibas



EXPLORE MORE AT:

The information and data contained in this brochure has been prepared by Lendlease in February 2024 solely as a guide and does not constitute advice. Whilst every effort has been made to provide accurate and complete information, the information contained in this brochure has been prepared in good faith and with due care, and no representation or warranty (express or implied) is made as to the accuracy, adequacy or reliability of any statements, estimates, opinions, plans, diagrams, images or other information contained in this brochure. Lendlease reserves the right to change the contents of this brochure at any time. To the maximum extent permitted by law, joint venture partners Lendlease and CPPIB and their related bodies corporate and respective directors, officers, employees, agents and advisers disclaim all liability and responsibility (including without limitation any liability arising from fault or negligence) for any direct or indirect loss, damage, cost or expense which may be suffered through the use of or reliance on anything contained in or omitted from the information contained in this brochure.

THE
TURING
BUILDING

